

2026 Catalog

Series 3

Compact Tractors
37 - 48 PS



For distribution and sales in the South Korean market only

Series 3 Compact Tractors

The Series 3 tractors are equipped to take on harder tasks in smaller spaces. They are designed to be durable and engineered for

efficiency. With a minimized overall height and high maneuverability, these tractors are ideal for jobs in low-ceiling areas.



T3040

Engine power **Lift capacity**
37 PS | 28 kW 880 kg | 1940 lb



K48L

Engine power **Lift capacity**
48 PS | 35.5 kW 1365 kg | 3009 lb



K48C

Engine power **Lift capacity**
48 PS | 35.5 kW 1365 kg | 3009 lb



K48

Engine power **Lift capacity**
48 PS | 35.5 kW 1365 kg | 3009 lb

Engineered for enhanced productivity and maneuverability

Engineered for productivity inside and out, the Series 3 tractors are ruggedly built and packed with features to minimize operator effort. These tractors come standard with sturdy cast iron linkages and easy to operate hydrostatic controls. Good clearance from the ground and overhead makes it easier to work on uneven terrain or within structures. With high engine efficiency, impressive lift capabilities, and the option of a foldable ROPS or heated cabin, the Series 3 tractors are ideal for light-to-medium duty jobs, all year round.

Most popular applications



Arable Farming



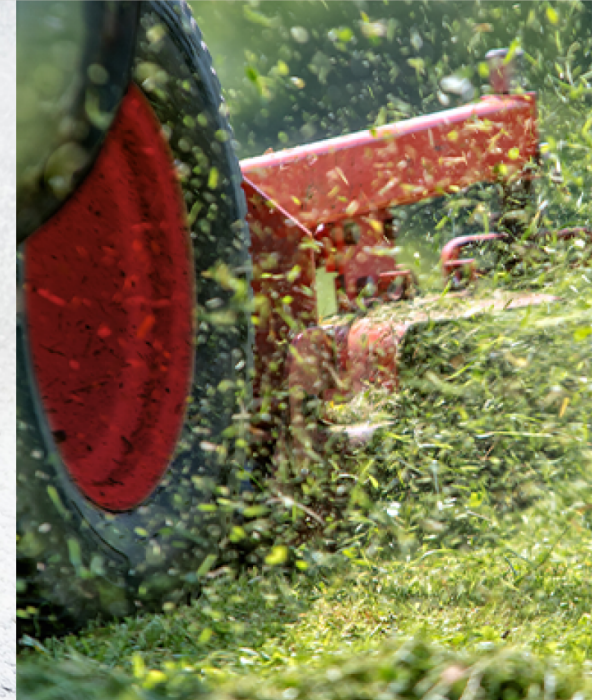
Construction



Snow Clearing



Landscaping



All the right features to get the job done



High-output, eco-friendly Yanmar engine

Built with the proven durability and stable performance of a Yanmar engine, it delivers dependable power that helps improve overall work quality.

Complies with emissions regulations
Excellent fuel efficiency and low noise help reduce operator fatigue
Proven durability and reliability for stable operation



Strong traction, longer working hours

Superior pulling performance in its class and a large-capacity fuel tank help improve both productivity and operating endurance.



Operator-focused controls and convenient operability

An ergonomically designed seat and intuitively arranged controls enhance operator comfort and ease of use.



Auto PTO & PTO on/off switch

With Auto PTO enabled, PTO stops when the implement is raised, and PTO power can be quickly engaged or disengaged with a single switch.



3-speed PTO

With a 3-speed PTO, operators can efficiently perform a wide range of tasks by matching PTO output to the working conditions.



Rear LED work light

Provides clear visibility for stable, reliable nighttime operations.

T3040

A compact tractor that doesn't compromise on performance



1. Digital Instrument Panel



2. Forward/Reverse lever



3. Seat

Key specifications:

Engine power
37 PS | 28 kW

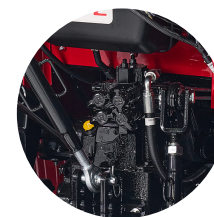
Engine manufacturer
Yanmar 3TNV88C

Lift capacity
880 kg | 1940 lb

PTO power
30 PS | 22 kW



4. Fuel tank



5. Rear external hydraulic valve, 4 ports



6. Battery disconnect switch

K48L

A compact tractor that doesn't compromise on performance



Key specifications:

Engine power
48 PS | 35.5 kW

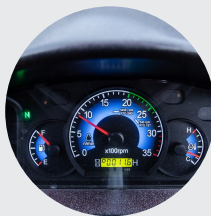
Engine manufacturer
TYM T2300

Lift capacity
1365 kg | 3009 lb

PTO power
41 PS | 30 kW



1. Tilt steering wheel



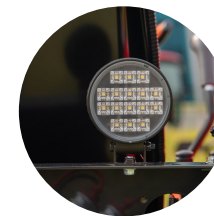
2. Digital Instrument Panel



3. PTO switch



4. External hydraulic control lever



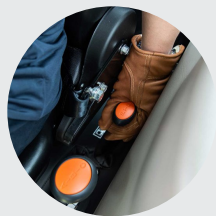
5. Rear LED work light



6. Rear external hydraulic valve

K48C

A compact tractor that doesn't compromise on performance



1. 3-speed PTO



2. Loader joystick



3. Digital Instrument Panel



4. PTO switch



5. Tilt steering wheel



6. Forward/reverse shuttle lever

Key specifications:

Engine power
48 PS | 35.5 kW

Engine manufacturer
TYM T2300

Lift capacity
1365 kg | 3009 lb

PTO power
41 PS | 30 kW



K48

A compact tractor that doesn't compromise on performance



Key specifications:

Engine power
48 PS | 35.5 kW

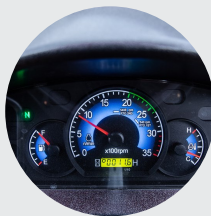
Engine manufacturer
TYM T2300

Lift capacity
1365 kg | 3009 lb

PTO power
41 PS | 30 kW



1. Tilt steering wheel



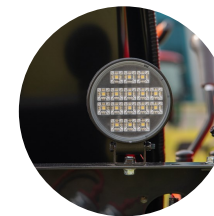
2. Digital Instrument Panel



3. PTO switch



4. External hydraulic control lever



5. Rear LED work light



6. Rear external hydraulic valve

Specification Guide

MODEL	T3040	K48L	K48C	K48
ENGINE				
Engine Manufacturer	Yanmar 3TNV88C	TYM T2300	TYM T2300	TYM T2300
Type	Natural aspiration	Natural aspiration	Natural aspiration	Natural aspiration
Engine power	37 PS 28 kW	48 PS 35.5 kW	48 PS 35.5 kW	48 PS 35.5 kW
PTO power	30 PS 22 kW	41 PS 30 kW	41 PS 30 kW	41 PS 30 kW
Rated engine speed	3000 rpm	2600 rpm	2600 rpm	2600 rpm
No. of cylinders	3	4	4	4
Displacement	1642 cc 100.200 cu. in.	2287 cc 139.56 cu. in.	2287 cc 139.56 cu. in.	2287 cc 139.56 cu. in.
Air cleaner	Dry element	Dry element	Dry element	Dry element
Alternator	12V, 70A	12V, 50A	12V, 70A	12V, 50A
Fuel system	CRDi	IDI	IDI	IDI
POWERTRAIN				
Transmission type	Mechanical	Synchro-shuttle	Synchro-shuttle	Synchro-shuttle
No. of speeds	F12 × R12	F12 × R12	F12 × R12	F12 × R12
Max. traveling speed	25.3 km/h 15.72 mph	25.2 km/h 15.65 mph	25.2 km/h 15.65 mph	25.2 km/h 15.65 mph
Brakes	Wet disc	Wet disc	Wet disc	Wet disc
Steering	Hydrostatic	Hydrostatic	Hydrostatic	Hydrostatic
Clutch	Dry disc	Dry disc	Dry disc	Dry disc
HYDRAULIC SYSTEM				
Pump type	Single gear pump	Gear pump	Gear pump	Gear pump
Implement flow	21.6 L/min 5.7 gpm	43.2 L/min 11.41 gpm	43.2 L/min 11.41 gpm	43.2 L/min 11.41 gpm
Steering flow	15.6 L/min 4.1 gpm	19.4 L/min 5.13 gpm	19.4 L/min 5.13 gpm	19.4 L/min 5.13 gpm
Total flow	37.2 L/min 9.8 gpm	62.6 L/min 16.54 gpm	62.6 L/min 16.54 gpm	62.6 L/min 16.54 gpm
Category, 3-point hitch	Cat 1	Cat1	Cat 1	Cat 1
Hitch lift capacity	880 kg 1940 lb	1365 kg 3009 lb	1365 kg 3009 lb	1365 kg 3009 lb
Hitch lift capacity at 24 inches behind link ends	538 kg 1186 lb	637 kg 1404 lb	637 kg 1404 lb	637 kg 1404 lb
Lift control type	Position	Position/Draft	Position/Draft	Position/Draft
No. of standard remote valves	4	4	4	4
PTO				
PTO type	Independent	Independent	Independent	Independent
PTO control	Electric/Hydro	Electric/Hydro	Electric/Hydro	Electric/Hydro
PTO rear	540/750/1000 rpm	540/750/1000 rpm	540/750/1000 rpm	540/750/1000 rpm
CAPACITIES				
Fuel tank	33 L 8.7 gal	27 L 7.13 gal	50 L 13.20 gal	27 L 7.13 gal
Coolant	4.8 L 5.1 qt	3.0 L 3.17 qt	3 L 3.17 qt	3.0 L 3.17 qt
Crankcase	3.2 L 3.3 qt	4.5 L 4.75 qt	4.5 L 4.75 qt	4.5 L 4.75 qt
Transmission/Hydraulics system	36 L 9.5 gal	34 L 8.98 gal	34 L 8.98 gal	34 L 8.98 gal

Front axle	8.2 L 8.7 qt	6.4 L 6.76 qt	6.4 L 6.76 qt	6.4 L 6.76 qt
DIMENSIONS & WEIGHTS				
Overall length with 3-point hitch	3086 mm 121.5 in.	3160 mm 124.40 in.	3325 mm 130.90 in.	3160 mm 124.40 in.
Overall width	1460 mm 57.5 in.	1535 mm 60.43 in.	1550 mm 61.02 in.	1535 mm 60.43 in.
Wheelbase	1640 mm 64.6 in.	1720 mm 67.71 in.	1750 mm 68.89 in.	1720 mm 67.71 in.
Height to top of ROPS	2600 mm 102.8 in.	2450 mm 96.45 in.	-	2450 mm 96.45 in.
Height to top of Cabin	-	-	2410 mm 94.88 in.	-
Min. ground clearance	431 mm 17 in.	395 mm 15.55 in.	395 mm 15.55 in.	395 mm 15.55 in.
Min. turn radius with brakes	2610 mm 102.8 in.	(L) 2490 mm 98.03 in. / (R) 2390 mm 94.09 in.	(L) 2550 mm 100.39 in. / (R) 2550 mm 100.39 in.	(L) 2490 mm 98.03 in. / (R) 2390 mm 94.09 in.
Min. turn radius without brakes	2870 mm 113 in.	(L) 3170 mm 124.80 in. / (R) 3080 mm 121.26 in.	(L) 2920 mm 114.96 in. / (R) 2950 mm 116.14 in.	(L) 3170 mm 124.80 in. / (R) 3080 mm 121.26 in.
Weight with ROPS	1390 kg 3064 lb	1580 kg 3483.30 lb	-	1580 kg 3483.30 lb
Weight with cab	-	-	1810 kg 3990.36 lb	-
Track width	F: 1190 mm / R: 1050 mm	F: 1270 mm / R: 1195 mm	F: 1270 mm / R: 1210 mm	F: 1270 mm / R: 1195 mm
STANDARD TIRES				
Agricultural - Front	8-16	7-16	9.5-16	9.5-16
Agricultural - Rear	12.4-24	11.2-24	13.6-24	13.6-24



Designed for your world

TYM creates tractors that bring together alluring form, advanced function and accessible value. Through Korean expertise in design, engineering and manufacturing, the company helps owners overcome every obstacle as they shape the world around them.

Headquartered in Korea with distribution across North America, Europe, and Asia, and assembly operations in the USA, TYM has been empowering customers for over 70 years.

www.tym.world