

2024 Catalog

Series 3

Compact Tractors

55 - 58 PS



For distribution and sales in the South Korean market only

Series 3 Compact Tractors

The Series 3 tractors are equipped to take on harder tasks in smaller spaces. They are designed to be durable and engineered for

efficiency. With a minimized overall height and high maneuverability, these tractors are ideal for jobs in low-ceiling areas.



T58

Engine power 55 ps Lift capacity 1733 kg



T58C

Engine power 55 ps Lift capacity 1733 kg



K57C

Engine power 58 ps Lift capacity 1415 kg



K57E

Engine power 58 ps Lift capacity 1231 kg



K58P

Engine power 58 ps Lift capacity 1963 kg



K58

Engine power 58 ps Lift capacity 1963 kg

Engineered for enhanced productivity and maneuverability

Engineered for productivity inside and out, the Series 3 tractors are ruggedly built and packed with features to minimize operator effort. These tractors come standard with sturdy cast iron linkages and easy to operate hydrostatic controls.

Good clearance from the ground and overhead makes it easier to work on uneven terrain or within structures. With high engine efficiency, impressive lift capabilities, and the option of a foldable ROPS or heated cabin, the Series 3 tractors are ideal for light-to-medium duty jobs, all year round.

Most popular applications



Arable Farming



Construction



Snow Clearing



Landscaping



All the right features to get the job done



4-cylinder TYM diesel engine with high output

4-cylinder TYM diesel engine with high output



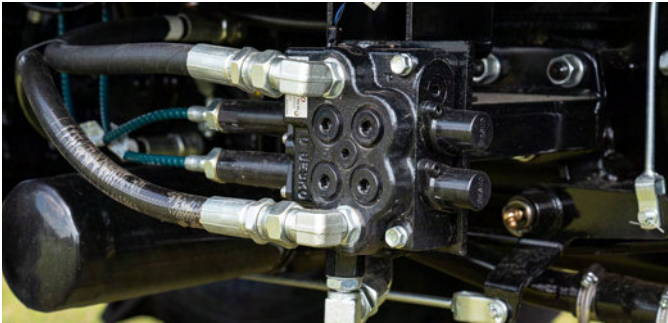
Superior operator amenities

Amenities such as cup holders and storage space near the operator.



Durable power steering and axle configuration

The heavy duty 4WD front axle allows the tractor to lift heavy loads and tow large implements. Powerful hydraulics support the power steering system, which benefits from a dual action mechanism using a hydraulic cylinder and tandem type hydraulic pump.



3rd function hydraulic valve to enhance attachment capabilities

Allowing for versatile attachment handling, this tractor comes ready with a 3rd function installation kit. It can maximize the use of a bucket attachment with 4-in-1 functionality, including lifting, tilting, dumping, and grappling.



Convenient one-touch hood open

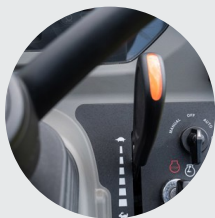
Convenient one-touch hood open

T58

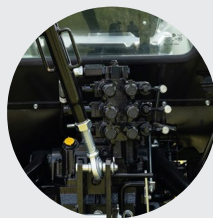
A compact tractor that balances power with maneuverability



1. PTO mode switch (OFF, MANUAL, AUTO)



2. Throttle lever



3. Rear external hydraulic valve

Key specifications:

Engine power
55 PS | 40.5 kW

Engine manufacturer
TYM T2300T

Lift capacity
1733 kg | 3822 lb

PTO power
44.9 PS | 33.0 kW



4. ROPS



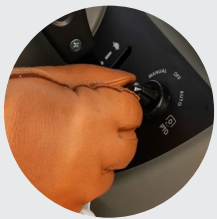
5. PTO lever



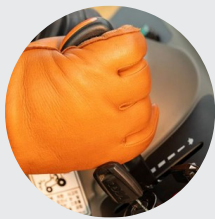
6. Joystick control for front-end loader

T58C

A compact tractor that balances power with maneuverability



1. PTO mode switch (OFF, MANUAL, AUTO)



2. Throttle lever



3. Rear external hydraulic valve

Key specifications:

Engine power
55 PS | 40.5 kW

Engine manufacturer
TYM T2300T

Lift capacity
1733 kg | 3822 lb

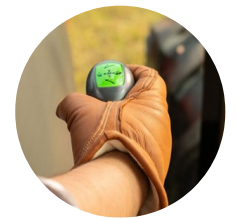
PTO power
43.1 PS | 31.7 kW



4. Cabin



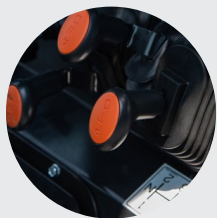
5. PTO ON/OFF switch



6. Joystick control for front-end loader

K57C

A compact tractor that delivers remarkable power and versatility



1. Multifunctional levers



2. Tilt steering wheel



3. Rear external hydraulic valve

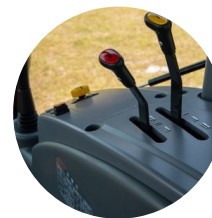
Key specifications:

Engine power
58 PS | 42.5 kW

Engine manufacturer
TYM T2300T

Lift capacity
1415 kg | 3120 lb

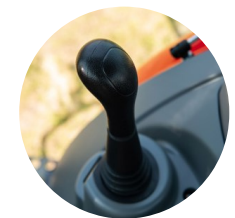
PTO power
48 PS | 35 kW



4. External hydraulic control lever



5. PTO safety switch



6. Joystick control for front-end loader

K57E

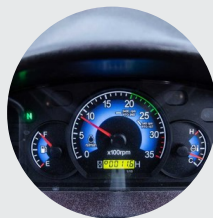
A compact tractor with the full package that meets your needs



1. Streamlined hood



2. 8 standard ballast weights



3. Electronic instrumental panel

Key specifications:

Engine power
58 PS | 42.5 kW

Engine manufacturer
TYM T2300T

Lift capacity
1231 kg | 2714 lb

PTO power
48 PS | 35 kW



4. Low-speed / FWD / PTO control lever



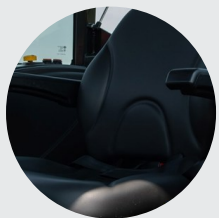
5. Rear LED work light



6. Rear external hydraulic valve

K58P

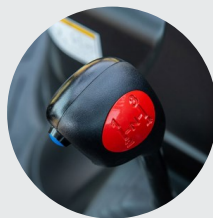
A compact tractor that delivers impressive function and incredible value



1. High-quality seat with armrests



2. Power shuttle



3. De-clutch

Key specifications:

Engine power
58 PS | 42.5 kW

Engine manufacturer
TYM T2300T

Lift capacity
1963 kg | 4328 lb

PTO power
48 PS | 35 kW



4. Tilt steering wheel



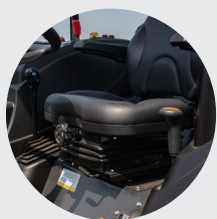
5. Rear external implement control



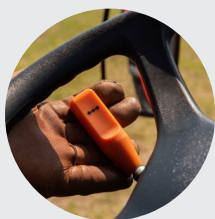
6. Electronic lift control

K58

A compact tractor that delivers impressive function and incredible value



1. High-quality seat with armrests



2. Power shuttle



3. De-clutch

Key specifications:

Engine power
58 PS | 42.5 kW

Engine manufacturer
TYM T2300T

Lift capacity
1963 kg | 4328 lb

PTO power
48 PS | 35 kW



4. Implement height control



5. Electronic lift control



6. Loader joystick

Specification Guide

MODEL	T58	T58C	K57C	K57E
ENGINE				
Engine manufacturer	TYM T2300T	TYM T2300T	TYM T2300T	TYM T2300T
Type	Turbocharger	Turbocharger	Turbocharger	Turbocharger
Engine power	55 PS 40.5 kW	55 PS 40.5 kW	58 PS 42.5 kW	58 PS 42.5 kW
PTO power	44.9 PS 33.0 kW	43.1 PS 31.7 kW	48 PS 35 kW	48 PS 35 kW
Rated engine speed	2600 rpm	2600 rpm	2600 rpm	2600 rpm
No. of cylinders	4	4	4	4
Displacement	2287 cc 139.5 cu. in.	2287 cc 139.5 cu. in.	2287 cc	2287 cc 139.5 cu. in.
Air cleaner	Dual dry	Single dry	건식	Dry element
Alternator	12V, 70A	12V, 70A	12V, 70A	12V, 50A
Fuel system	IDI	IDI	IDI	IDI
POWERTRAIN				
Transmission type	Synchro-shuttle	Synchro-shuttle	Synchro-shuttle	Synchro-shuttle
No. of speeds	F8 x R8	F8 x R8	F24 x R24	F16 x R16
Max. traveling speed	26.49 km/h 16.46 mph	29.7 km/h 18.45 mph	30.77 km/h 19.12 mph	28.89 km/h 17.95 mph
Brakes	Wet disc	Wet disc	Wet disc	Wet disc
Steering	Hydrostatic	Hydrostatic	Hydrostatic	Hydrostatic
Clutch	Dry disc	Dry disc	Dry disc	Dry disc
HYDRAULIC SYSTEM				
Pump type	Dual gear pump	Dual gear pump	Gear pump	Gear pump
Implement flow	29 L/min 7.66 gpm	29 L/min 7.66 gpm	43.2 L/min 11.41 gpm	43.2 L/min 11.41 gpm
Steering flow	16.08 L/min 4.25 gpm	16.08 L/min 4.25 gpm	19.4 L/min 5.13 gpm	19.4 L/min 5.13 gpm
Total flow	45.08 L/min 11.91 gpm	45.08 L/min 11.91 gpm	62.6 L/min 16.54 gpm	62.6 L/min 16.54 gpm
Category, 3-point hitch	Cat 1	Cat 1	Cat 1	Cat 1
Hitch lift capacity	1733 kg 3822 lb	1733 kg 3822 lb	1415 kg 3120 lb	1231 kg 2714 lb
Hitch lift capacity at 24 inches behind link ends	1384 kg 3050.61 lb	1386 kg 3057 lb	741 kg 1634 lb	861 kg 1898.18 lb
Lift control type	Position	Position/Draft/Elec	Position/Draft	Position/Draft
No. of standard remote valves	2	6	4	4
PTO				
PTO type	Independent	Independent	Independent	Independent
PTO control	Electric/Hydro	Electric/Hydro	Electric/Hydro	Electric/Hydro
PTO rear	540/750/1000 rpm	540/750/1000 rpm	540/750/1000 rpm	540/750/1000 rpm
CAPACITIES				
Fuel tank	60 L 17.0 gal	60 L 17.0 gal	45 L 11.88 gal	45 L 11.88 gal
Coolant	7.0 L 7.39 qt	6.5 L 6.9 qt	3.0 L 3.17 qt	3.0 L 3.17 qt
Crankcase	6.4 L 6.8 qt	6.4 L 6.8 qt	6.4 L 6.8 qt	6.4 L 6.8 qt
Transmission/Hydraulics system	35 L 9.2 gal	35 L 9.2 gal	39 L 10.30 gal	39 L 10.30 gal
Front axle	9.9 L 10.5 qt	9.9 L 10.5 qt	6.4 L 6.76 qt	6.4 L 6.76 qt
DIMENSIONS & WEIGHTS				
Overall length with 3-point hitch	3400 mm 133.9 in.	3400 mm 133.9 in.	3280 mm 129.13 in.	3200 mm 125.98 in.
Overall width	1610 mm 63.4 in.	1610 mm 63.8 in.	1540 mm 60.62 in.	1540 mm 60.62 in.
Wheelbase	1935 mm 76.2 in.	1935 mm 76.2 in.	1805 mm 71.06 in.	1805 mm 71.06 in.
Height to top of ROPS	2490 mm 98 in.	-	-	2490 mm 98.03 in.
Height to top of cabin	-	2490 mm 98 in.	2380 mm 93.70 in.	-
Min. ground clearance	340 mm 13.4 in.	350 mm 13.8 in.	380 mm 14.96 in.	380 mm 14.96 in.
Min. turn radius with brakes	(L) 3000 mm 118.11 in. / (R) 3000 mm 118.11 in.	3080 mm 121.2 in.	(L) 2740 mm 107.87 in. / (R) 2670 mm 105.12 in.	(L) 2410 mm 94.88 in. / (R) 2390 mm 94.09 in.
Min. turn radius without brakes	(L) 3190 mm 125.59 in. / (R) 3230 mm 127.17 in.	3340 mm 131.5 in.	(L) 3270 mm 128.74 in. / (R) 3200 mm 125.98 in.	(L) 2850 mm 112.20 in. / (R) 2820 mm 111.02 in.
Weight with ROPS	1980 kg 4365 lb	-	-	1720 kg 3791.95 lb
Weight with cab	-	1950 kg 4299 lb	2040 kg 5299.91 lb	-
Track width	F: 1290 mm / R: 1215 mm	F: 1290 mm / R: 1215 mm	F: 1290 mm / R: 1200 mm	F: 1290 mm / R: 1180 mm
STANDARD TIRES				
Agricultural - Front	9.5-16	9.5-16	9.5-16	9.5-16
Agricultural - Rear	13.6-26	13.6-26	13.6-26	13.6-26

Specification Guide

MODEL	K58P	K58
ENGINE		
Engine manufacturer	TYM T2300T	TYM T2300T
Type	Turbocharger	Turbocharger
Engine power	58 PS 42.5 kW	58 PS 42.5 kW
PTO power	48 PS 35 kW	48 PS 35 kW
Rated engine speed	2600 rpm	2600 rpm
No. of cylinders	4	4
Displacement	2287 cc 139.5 cu. in.	2287 cc 139.5 cu. in.
Air cleaner	Dry element	Dry element
Alternator	12V, 70A	12V, 70A
Fuel system	IDI	IDI
POWERTRAIN		
Transmission type	Synchro-shuttle	Synchro-shuttle
No. of speeds	F24 × R24	F24 × R24
Max. traveling speed	32.83 km/h 20.39 mph	32.83 km/h 20.39 mph
Brakes	Wet disc	Wet disc
Steering	Hydrostatic	Hydrostatic
Clutch	Wet disc	Wet disc
HYDRAULIC SYSTEM		
Pump type	Gear pump	Gear pump
Implement flow	43.2 L/min 11.41 gpm	43.2 L/min 11.41 gpm
Steering flow	19.44 L/min 5.13 gpm	19.44 L/min 5.13 gpm
Total flow	62.64 L/min 16.54 gpm	62.64 L/min 16.54 gpm
Category, 3-point hitch	Cat 2	Cat 2
Hitch lift capacity	1963 kg 4328 lb	1963 kg 4328 lb
Hitch lift capacity at 24 inches behind link ends	1394 kg 3073 lb	1394 kg 3073 lb
Lift control type	Position/Draft/TBS	Position/Draft
No. of standard remote valves	4	6
PTO		
PTO type	Independent	Independent
PTO control	Electric/Hydro	Electric/Hydro
PTO rear	540/750/1000 rpm	540/750/1000 rpm
CAPACITIES		
Fuel tank	58 L 15.32 gal	58 L 15.32 gal
Coolant	3.0 L 3.17 qt	6.0 L 6.33 qt
Crankcase	6.4 L 6.8 qt	6.4 L 6.8 qt
Transmission/Hydraulics system	44 L 11.62 gal	44 L 11.62 gal
Front axle	6.4 L 6.76 qt	6.4 L 6.76 qt
DIMENSIONS & WEIGHTS		
Overall length with 3-point hitch	3420 mm 134.64 in.	3570 mm 140.55 in.
Overall width	1765 mm 69.48 in.	1750 mm 68.89 in.
Wheelbase	2000 mm 78.74 in.	2005 mm 78.93 in.
Height to top of ROPS	-	2660 mm 104.72 in.
Height to top of cabin	2515 mm 99.01 in.	-
Min. ground clearance	430 mm 16.92 in.	460 mm 18.11 in.
Min. turn radius with brakes	(L) 2660 mm 104.72 in. / (R) 2620 mm 103.15 in.	(L) 2740 mm 107.87 in. / (R) 2710 mm 106.69 in.
Min. turn radius without brakes	(L) 3170 mm 124.80 in. / (R) 3160 mm 124.41 in.	(L) 3160 mm 124.41 in. / (R) 3150 mm 124.02 in.
Weight with ROPS	-	2110 kg 4651.75 lb
Weight with cab	2225 kg 4905.28 lb	-
Track width	F: 1340 mm / R: 1355 mm	F: 1340 mm / R: 1350 mm
STANDARD TIRES		
Agricultural - Front	9.5-20	9.5-20
Agricultural - Rear	14.9-28	14.9-28



Designed for your world

TYM creates tractors that bring together alluring form, advanced function and accessible value. Through Korean expertise in design, engineering and manufacturing, the company helps owners overcome every obstacle as they shape the world around them.

Headquartered in Korea with distribution across North America, Europe, and Asia, and assembly operations in the USA, TYM has been empowering customers for over 70 years.

www.tym.world