

# T25

**Sub Compact, Series 1**  
**24.7 hp**



# A sub-compact tractor engineered for productivity inside and out

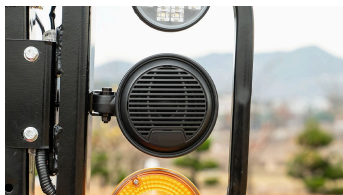
The T25 tractor is proof that great things can indeed come in small packages. Offering enhanced power without sacrificing maneuverability, it's equipped with a powerful engine and ergonomic operator controls, ensuring both performance and comfort.



1. 2-range hydrostatic transmission (HST)



2. 3rd function hydraulic valve (optional)



3. 2 USB ports

4. Waterproof Bluetooth speaker



5. Wireless smartphone charger



6. Wide loadspace with toolbox



### Superior operator amenities

Fully equipped with modern amenities to maximize operator comfort, this tractor is complete with a large cup holder, wireless smartphone charging dock, multiple USB ports to charge personal devices and a Bluetooth speaker. These features are designed to promote productivity, keeping drivers hydrated, connected, and alert during every job.



### Customizable rear accessories for every need

Attached to the right and left verticals on the foldable ROPS structure, this tractor features a modular system with three slots for lights, work lamps, and speakers. Based on operator preference and working conditions, more speakers and lamps can be attached. This brings operators comfort and security in daylight or at night.



### High torque, water-cooled Yanmar diesel engine

The Yanmar engine delivers more torque at lower RPMs than competitors in its class. This water-cooled engine heats up faster and stabilizes temperature effectively while the tractor is running. With Tier 4 certification, it meets stringent environmental and noise emission standards.



### Upgraded detailing to reduce operator effort

Packed with value-added features to enhance ease of operation, including a new fuel cap design to enhance grip and reduce manual effort and a brighter meta panel engineered to enhance operator awareness.



### High-capacity fuel tank for time-intensive work

The high-capacity fuel tank allows the tractor to operate for longer periods without stopping to refuel. Paired with a fuel-efficient engine, this enables uninterrupted and efficient operations during the busiest seasons.



### Comfortable and secure seating

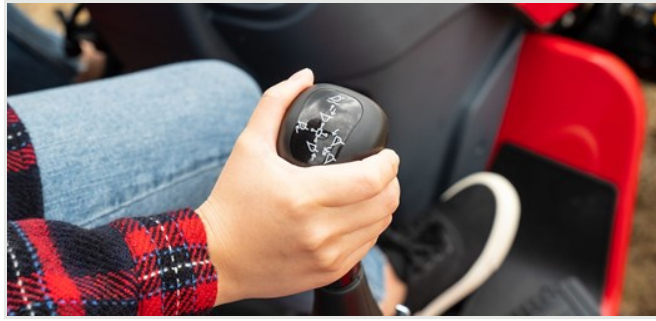
In addition to a standard retractable seatbelt and cushioning, the seat of this tractor can hold over 400 lb (190 kg) and is equipped with a heavy duty mechanical suspension. While the seat provides comfort, the suspension acts as a buffer on uneven ground, keeping the operator secure in situations where there is a risk of impact on the lower back. The seat can also be manually adjusted for weight, enabling operators to have the most optimal seating position.





### **3-point hitch with powerful lift capacity**

The 3-point linkage on the rear has an impressive lift capacity that reaches the end ball joint. The rear PTO control can be used to adjust rpm based on the task, increasing it for more intensive applications like slashing and digging.



### **3rd function hydraulic valve to enhance attachment capabilities (optional)**

Allowing for versatile attachment handling, this tractor comes ready with a 3rd function installation kit. It can maximize the use of a bucket attachment with 4-in-1 functionality, including lifting, tilting, dumping, and grappling.



# Technical specifications

ENGINE	
Engine manufacturer	Yanmar 3TNV80F
Type	Natural aspiration
Gross engine power	24.7 hp   18.4 kW
PTO power	18.3 hp   13.6 kW
Rated engine speed	3000 rpm
No. of cylinders	3
Displacement	77.3 cu. in.   1267 cc
Air cleaner	Single dry
Alternator	12V, 40A
Fuel system	IDI
POWERTRAIN	
Transmission type	HST
No. of speeds	Infinite 2-Range
Max. traveling speed	13.7 mph   22 km/h
Brakes	Wet disc
Steering	Hydrostatic
Clutch	N/A
CAPACITIES	
Fuel tank	6.6 gal   25 L
Coolant	3.8 qt   3.6 L
Crankcase	2.9 qt   2.7 L
Transmission/Hydraulics system	4.5 gal   17 L
Front axle	4.7 qt   4.5 L

PTO	
PTO type	Independent
PTO control	Electric/Hydro
PTO rear	540 rpm
HYDRAULIC SYSTEM	
Pump type	Single gear pump
Implement flow	4.2 gpm   15.8 L/min
Steering flow	2.8 gpm   10.5 L/min
Total flow	6.9 gpm   26.3 L/min
Category, 3-point hitch	I
Hitch lift capacity	1551.2 lb   703.6 kg
Hitch lift capacity at 24 inches behind link ends	1229.7 lb   557.8 kg
Lift control type	Position
No. of standard remote valves	1
DIMENSIONS & WEIGHTS	
Overall length with 3-point hitch	102.8 in.   2610 mm
Overall width	50 in.   1270 mm
Wheelbase	61 in.   1550 mm
Height to top of ROPS	91.3 in.   2320 mm
Height to top of cabin	-
Min. ground clearance	10.2 in.   260 mm
Min. turn radius with brakes	94.1 in.   2390 mm
Min. turn radius without brakes	111.8 in.   2840 mm
Weight with ROPS	2046 lb   928 kg
Weight with cab	-
STANDARD TIRES	
R1 Agricultural - Front	6-12 4PR
R1 Agricultural - Rear	9.5-20 6PR
R3 Turf - Front	Turf Master 23x8.50-12 NHS TL 4PR
R3 Turf - Rear	Multi-Trac CS 33x12.50-16.5 NHS TL 4PR
R4 Industrial - Front	Trac Chief 23x8.50-14 NHS TL 4PR
R4 Industrial - Rear	36X12.5-15

# Upgrades for the Series 1, T25

Complement the capabilities of your TYM tractor with compatible accessories and options.

## Accessories

Front counterweights
Mulching kits
ROPS-mounted bluetooth speaker
TB65A Mechanical Thumb
ROPS-mounted light kit
Mid-PTO kit
Block heater
BHPAD100 Street Pads
Auxiliary hydraulic kit
Rear wiper kit



## Options

Tire	R3 Turf Tires	F Turf Master 23x8.50 - 12 NHS TL 4PR	R Multi-Trac CS 33x12.50-16.5 NHS TL 4PR
Cabin	CAB25		
Tire	R4 Industrial Tires	F Trac Chief 23x8.50 - 14 NHS TL 4PR	R Trac Chief 14-17.5 NHS TL 6PR



# Designed for your world

TYM creates tractors that bring together alluring form, advanced function and accessible value. Through Korean expertise in design, engineering and manufacturing, the company helps owners overcome every obstacle as they shape the world around them.

Headquartered in Korea with distribution across North America, Europe, and Asia, and assembly operations in the USA, TYM has been empowering customers for over 70 years.

[www.tym.world](http://www.tym.world)