

# T3025C

Compact, Series 3  
24 hp



# A compact tractor robust enough to take on challenges of all sizes

The 3025C tractor is designed for peak performance through versatility and durability. Offering customizable options throughout, this mid-sized Series 3 compact tractor helps you achieve your goals in applications of varying intensities.



1. New iconic hood



3. Ergonomic lever



5. High-capacity fuel tank



2. Comfortable suspension seat



4. Responsive forward/reverse HST



6. LED light (Standard)



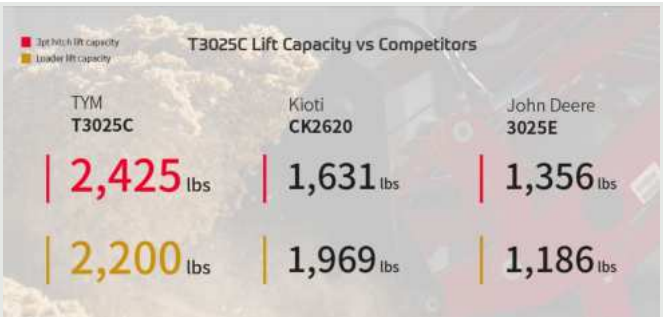
### The highly economical TYM engine

The powerful 24-horsepower TYM engine eliminates the need for regeneration, reducing maintenance costs and making servicing easier and more convenient.



### Factory-installed joystick

The standard loader joystick helps perform various tasks. By installing a 3rd function kit as needed, it enables even more diverse operations, such as grapple work.



### The most powerful 3-point hitch lift capacity

With the most powerful 3-point hitch lift capacity in its class, it can easily handle heavy implements and perform effortlessly in any work environment.



### A cabin designed for a comfortable working environment in any condition

With the widest and most comfortable space in its class, this tractor maximizes operator comfort. It also offers enhanced visibility with standard heating and air conditioning.



### Cruise control

The cruise control feature allows you to set and maintain the engine RPM regardless of the tractor's load conditions.



### External lever to adjust rear attachments

Along with in-cabin controls, this tractor has an external position lever near the 3-point hitch. Operators can adjust attachment positions immediately after connection without returning to the cabin, enabling quick and convenient attachment switching, which enhances tractor versatility.



# Technical specifications

ENGINE	
Engine manufacturer	TYM T1700N6
Type	Natural aspiration
Gross engine power	24 hp   18 kW
PTO power	21 hp   15.7 kW
Rated engine speed	2100 rpm
No. of cylinders	3
Displacement	104.5 cu. in.   1714 cc
Air cleaner	Dry element
Alternator	12V, 70A
Fuel system	IDI
POWERTRAIN	
Transmission type	HST
No. of speeds	3-Range
Max. traveling speed	14.6 mph   23.6 km/h
Brakes	Wet, Multi disc
Steering	Hydrostatic
Clutch	N/A
CAPACITIES	
Fuel tank	7.1 gal   27 L
Coolant	5.3 qt   5 L
Crankcase	4.5 qt   4.3 L
Transmission/Hydraulics system	9.8 gal   37 L
Front axle	6.8 qt   6.4 L

PTO	
PTO type	Independent
PTO control	Wet/Multi disc
PTO rear	540 rpm
HYDRAULIC SYSTEM	
Pump type	Dual gear pump
Implement flow	7.7 gpm   29.3 L/min
Steering flow	4.2 gpm   15.8 L/min
Total flow	11.9 gpm   45.1 L/min
Category, 3-point hitch	I
Hitch lift capacity	3306 lb   1500 kg
Hitch lift capacity at 24 inches behind link ends	2425 lb   1100 kg
Lift control type	Position
No. of standard remote valves	Loader: 4 / Rear: 0
DIMENSIONS & WEIGHTS	
Overall length with 3-point hitch	120.9 in.   3071 mm
Overall width	56.6 in.   1413 mm
Wheelbase	65.7 in.   1670 mm
Height to top of ROPS	-
Height to top of cabin	89.3 in.   2267 mm
Min. ground clearance	13.1 in.   334 mm
Min. turn radius with brakes	(L) 105.51 in.   2680 mm / (R) 104.72 in.   2660 mm
Min. turn radius without brakes	(L) 105.51 in.   2680 mm / (R) 104.72 in.   2660 mm
Weight with ROPS	-
Weight with cab	3313 lb   1503 kg
STANDARD TIRES	
R1 Agricultural - Front	7-16, 6PR
R1 Agricultural - Rear	11.2-24, 8PR
R3 Turf - Front	-
R3 Turf - Rear	-
Golf Tires - Front	27x8.5-15, 6PR
Golf Tires - Rear	41x14.00, 4PR
R4 Industrial - Front	25x8.5-14, 6PR
R4 Industrial - Rear	380/70-19.5, 6PR

# L3035 Front-End Loader

## Attachments

The L3035 front-end loader takes advantage of the power and durability of compatible TYM compact tractors. Ideal for tasks that require more strength, these front-end loaders can help you get your tasks done more efficiently.

Lift height	104.9 in.   2665 mm
Lift capacity at pivot point (max. height)	2200 lb   998 kgf
Bucket capacity	8.1 cu. ft   0.23 cu. m

CAPACITIES & REACH	
Lift height	104.9 in.   2665 mm
Max. lift height under level bucket	96.3 in.   2445 mm
Clearance with bucket dumped	77.0 in.   1955 mm
Reach at maximum lift height	15.9 in.   405 mm
Max. dump angle	55°
Reach with bucket on ground	72.7 in.   1847 mm
Max. rollback angle	35°
Digging depth	4.7 in.   119 mm
Lift capacity at pivot point (max. height)	2200 lb   998 kgf
Breakout force at ground level, pivot pins	3422 lb   1552 kgf
Bucket rollback force at ground line	2557 lb   1160 kgf
Bucket capacity	8.1 cu. ft   0.23 cu. m
Self leveling	NA
Relief valve setting (loader control valve)	2446 psi   172 kg/sq. cm
Compatible bucket sizes	66" Front-end loader bucket



DIMENSIONS & WEIGHTS	
Overall height in carry position	51.0 in.   1295 mm
Depth of Attachment (to the back of the inner shell)	20.9 in.   530 mm
Height of Attachment	20.9 in.   530 mm
Length of Attachment (to pivot pin)	28.0 in.   712 mm
Weight of boom & quick attach mechanism (1)	496 lb   225 kg
Weight of mounting frame (2)	269 lb   122 kg
Weight of bucket (3)	243 lb   110 kg
Loader total weight (1+2+3)	1008 lb   457 kg
Lift cylinder	2.2 × 1.2 in.   55 × 30 mm
Bucket cylinder	2.0 × 1.2 in.   50 × 30 mm
Attachment used for specification	62 in.   1570 mm
CYCLE TIMES	
Boom raising time	4.4 sec
Boom lowering time	3.1 sec
Bucket rollback time	2.6 sec
Bucket dumping time	4.2 sec

# BH70 Backhoe

## Attachments

The BH150 complements the power and strength of the Series 2 compact tractors, enhancing performance and versatility without compromising safety.

Digging depth	92.2 in.   2342 mm
Loading height	89.3 in.   2268 mm
Backhoe reach	117.7 in.   3134 mm

PERFORMANCE	
Digging depth	92.2 in.   2342 mm
Loading height	89.3 in.   2268 mm
Max. leveling angle	10°
Angle of departure	18°
CAPACITIES & REACH	
Backhoe reach	117.7 in.   3134 mm
Swing angle	180°
Bucket rotation	149°
Stabilizer spread (lowered position)	99.3 in.   2522 mm
Stabilizer spread (raised position)	71.5 in.   1816 mm



DIMENSIONS & WEIGHTS	
Transport overhang	47 in.   1194 mm
Transport height (max.)	83.5 in.   2121 mm
Compatible bucket sizes	9" backhoe bucket
Compatible bucket sizes	12" backhoe bucket
Compatible bucket sizes	16" backhoe bucket
Compatible bucket sizes	18" backhoe bucket
Compatible bucket sizes	24" backhoe bucket
COMPATIBLE BUCKET SIZES	
TYM's multi-purpose buckets are capable of bulldozing, scraping, loading, metering, moving, and clamping material.	
Large_09	Large_12
Large_16	Large_18
Large_24	

# BH150 Backhoe

## Attachments

The BH150 complements the power and strength of the Series 2 compact tractors, enhancing performance and versatility without compromising safety.

Digging depth	92.2 in.   2342 mm
Loading height	89.3 in.   2268 mm
Backhoe reach	117.7 in.   3134 mm

PERFORMANCE	
Digging depth	92.2 in.   2342 mm
Loading height	89.3 in.   2268 mm
Max. leveling angle	10°
Angle of departure	18°
CAPACITIES & REACH	
Backhoe reach	117.7 in.   3134 mm
Swing angle	180°
Bucket rotation	149°
Stabilizer spread (lowered position)	99.3 in.   2522 mm
Stabilizer spread (raised position)	71.5 in.   1816 mm



DIMENSIONS & WEIGHTS	
Transport overhang	47 in.   1194 mm
Transport height (max.)	83.5 in.   2121 mm
Compatible bucket sizes	9" backhoe bucket
Compatible bucket sizes	12" backhoe bucket
Compatible bucket sizes	16" backhoe bucket
Compatible bucket sizes	18" backhoe bucket
Compatible bucket sizes	24" backhoe bucket
COMPATIBLE BUCKET SIZES	
TYM's multi-purpose buckets are capable of bulldozing, scraping, loading, metering, moving, and clamping material.	
Large_09	Large_12
Large_16	Large_18
Large_24	

# BH200 Backhoe

## Attachments

The BH200 complements the power and strength of the Series 3 compact tractors, enhancing performance and versatility without compromising safety.

Digging depth	91.2 in.   2317 mm
Loading height	90 in.   2286 mm
Backhoe reach	123.6 in.   3140 mm

PERFORMANCE	
Digging depth	91.2 in.   2317 mm
Loading height	90 in.   2286 mm
Max. leveling angle	10°
Angle of departure	21°
CAPACITIES & REACH	
Backhoe reach	123.6 in.   3140 mm
Swing angle	180°
Bucket rotation	149°
Stabilizer spread (lowered position)	88.8 in.   2256 mm
Stabilizer spread (raised position)	68.4 in.   1737 mm



DIMENSIONS & WEIGHTS	
Transport overhang	46.8 in. (1189 mm)
Transport height (max.)	85.2 in.   2164 mm
Compatible bucket sizes	9" backhoe bucket
Compatible bucket sizes	12" backhoe bucket
Compatible bucket sizes	16" backhoe bucket
Compatible bucket sizes	18" backhoe bucket
Compatible bucket sizes	24" backhoe bucket
COMPATIBLE BUCKET SIZES	
TYM's multi-purpose buckets are capable of bulldozing, scraping, loading, metering, moving, and clamping material.	
Large_09	Large_12
Large_16	Large_18
Large_24	



# Upgrades for the Series 3, T3025C

Complement the capabilities of your TYM tractor with compatible accessories and options.

## Accessories



## Options

Tire	R4 Industrial Tires	F 25x8.50 - 14	R 15x19.5
------	---------------------	----------------	-----------



# Designed for your world

TYM creates tractors that bring together alluring form, advanced function and accessible value. Through Korean expertise in design, engineering and manufacturing, the company helps owners overcome every obstacle as they shape the world around them.

Headquartered in Korea with distribution across North America, Europe, and Asia, and assembly operations in the USA, TYM has been empowering customers for over 70 years.

[www.tym.world](http://www.tym.world)