

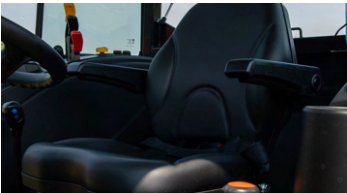
K58P

Compact, Series 3
58 PS



A compact tractor that delivers impressive function and incredible value

Centered around its powerful 58 PS turbo engine and functional features, the K58P delivers exceptional value and performance. The enhanced hydraulic packages provide 6 ports on the front as well as the rear to take advantage of a wide range of attachments.



1. High-quality seat with armrests



3. De-clutch



2. Power shuttle



4. Tilt steering wheel



5. Rear external implement control



6. Electronic lift control



4-cylinder TYM diesel engine with high output

Equipped with a powerful 4-cylinder, Stage V engine, this tractor boasts the power of a mid-sized tractor while maintaining a compact size.



Deluxe cabin with AC and heater

Standard AC and heater and helps operators work comfortably regardless of the season. It also increases the work efficiency by increasing visibility.



Door catch

The convenient door catch makes opening and closing the door smooth.



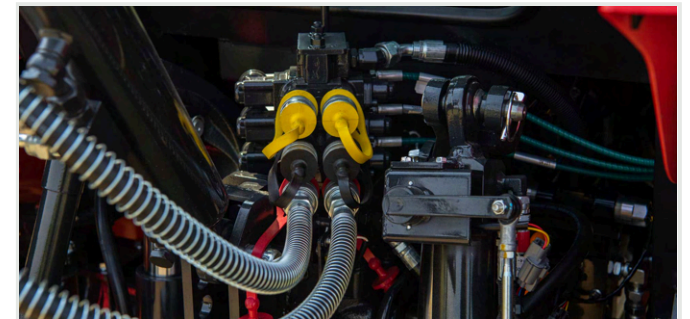
Seat with armrest

The comfortable driver's seat with armrests reduces fatigue during long operations.



High-capacity fuel tank

High-capacity fuel tanks allow long operating times without refueling and improves engine fuel efficiency.



6-port rear external hydraulic valve

The 6-port rear external hydraulic valves allows for a wide variety of implements to be installed. This allows for easy rotary tilling, plowing, and transportation of cargo with the tractor.

Technical specifications

ENGINE	
Engine manufacturer	TYM T2300T
Type	Turbocharger
Gross engine power	58 PS 42.5 kW
PTO power	48 PS 35 kW
Rated engine speed	2600 rpm
No. of cylinders	4
Displacement	2287 cc 139.5 cu. in.
Air cleaner	Dry element
Alternator	12V, 70A
Fuel system	IDI
POWERTRAIN	
Transmission type	Synchro-shuttle
No. of speeds	F24 × R24
Max. traveling speed	32.83 km/h 20.39 mph
Brakes	Wet disc
Steering	Hydrostatic
Clutch	Wet disc
CAPACITIES	
Fuel tank	58 L 15.32 gal
Coolant	3.0 L 3.17 qt
Crankcase	6.4 L 6.8 qt
Transmission/Hydraulics system	44 L 11.62 gal
Front axle	6.4 L 6.76 qt

PTO	
PTO type	Independent
PTO control	Electric/Hydro
PTO rear	540/750/1000 rpm
HYDRAULIC SYSTEM	
Pump type	Gear pump
Implement flow	43.2 L/min 11.41 gpm
Steering flow	19.44 L/min 5.13 gpm
Total flow	62.64 L/min 16.54 gpm
Category, 3-point hitch	Cat 2
Hitch lift capacity	1963 kg 4328 lb
Hitch lift capacity at 24 inches behind link ends	1394 kg 3073 lb
Lift control type	Position/Draft/TBS
No. of standard remote valves	4
DIMENSIONS & WEIGHTS	
Overall length with 3-point hitch	3420 mm 134.64 in.
Overall width	1765 mm 69.48 in.
Wheelbase	2000 mm 78.74 in.
Height to top of ROPS	-
Height to top of cabin	2515 mm 99.01 in.
Min. ground clearance	430 mm 16.92 in.
Min. turn radius with brakes	(L) 2660 mm 104.72 in. / (R) 2620 mm 103.15 in.
Min. turn radius without brakes	(L) 3170 mm 124.80 in. / (R) 3160 mm 124.41 in.
Weight with ROPS	-
Weight with cab	2225 kg 4905.28 lb
Track width	F: 1340 mm / R: 1355 mm
STANDARD TIRES	
Agricultural - Front	9.5-20
Agricultural - Rear	14.9-28

KJL58 Front-End Loader

Attachments

The TYM KJL58 front-end loader raises the bar in material handling and productivity. Providing an impressive lift height and capacity, the KJL58 complements the power and performance of compatible TYM K58P compact tractors.

Lift height	3115 mm 122.6 in.
Lift capacity at pivot point (max. height)	940 kgf 2072 lb
Self leveling	Available

CAPACITIES & REACH	
Lift height	3115 mm 122.6 in.
Max. lift height under level bucket	2902 mm 114.3 in.
Clearance with bucket dumped	2422 mm 95.4 in.
Reach at maximum lift height	168 mm 6.6 in.
Max. dump angle	80°
Reach with bucket on ground	2155 mm 84.8 in.
Max. rollback angle	50°
Digging depth	130 mm 5.1 in.
Lift capacity at pivot point (max. height)	940 kgf 2072 lb
Breakout force at ground level, pivot pins	1343 kgf 2961 lb
Bucket rollback force at ground line	1556 kgf 3430 lb
Self leveling	Available
Relief valve setting (loader control valve)	165 kg/sq. cm 2347 psi
Compatible bucket sizes	66" Front-end loader bucket
DIMENSIONS & WEIGHTS	
Overall height in carry position	1670 mm 65.7 in.
Depth of Attachment (to the back of the inner shell)	549 mm 21.6 in.



Height of Attachment	510 mm 20.1 in.
Length of Attachment (to pivot pin)	665 mm 26.2 in.
Weight of boom & quick attach mechanism (1)	238 kg 525 lb
Weight of mounting frame (2)	85 kg 187 lb
Weight of bucket (3)	108 kg 238 lb
Loader total weight (1+2+3)	431 kg 950 lb
Lift cylinder	60 × 40 mm 2.4 × 1.6 in.
Bucket cylinder	60 × 35 mm 2.4 × 1.4 in.
Attachment used for specification	1570 mm 61.8 in.

CYCLE TIMES	
Boom raising time	4.5 sec
Boom lowering time	3.1 sec
Bucket rollback time	2.2 sec
Bucket dumping time	3.0 sec

COMPATIBLE BUCKET SIZES	
TYM's multi-purpose buckets are capable of bulldozing, scraping, loading, metering, moving, and clamping material.	
66" Front-End Loader bucket	



Designed for your world

TYM creates tractors that bring together alluring form, advanced function and accessible value. Through Korean expertise in design, engineering and manufacturing, the company helps owners overcome every obstacle as they shape the world around them.

Headquartered in Korea with distribution across North America, Europe, and Asia, and assembly operations in the USA, TYM has been empowering customers for over 70 years.

www.tym.world