

# T25

**Sub Compact, Series 1**  
**24.2 PS**



# A sub-compact tractor engineered for productivity inside and out

This tractor is proof that good things can come in small packages. The T25 enables brings you greater power without compromising on maneuverability, backed by a powerful engine and ergonomic operator controls.



1. Linkage for optional loader



3. Foldable ROPS or all-weather cabin



5. One-touch open hood



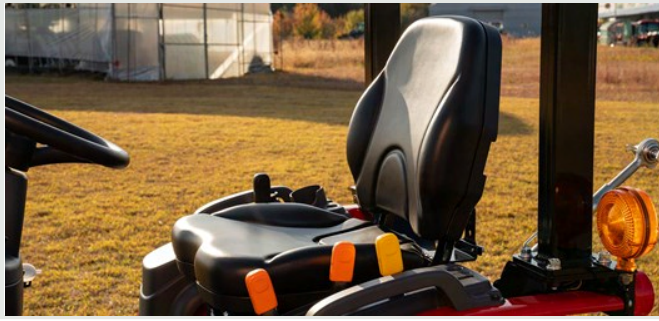
2. 2-range HST



4. Throttle lever



6. Large-volume fuel tank



### Ergonomic features for productivity

A wide operator cabin with a flat floor offers good visibility and ample leg room, while all controls are within arms' reach. The accelerator, brake pedal, differential lock, and parking brake are easily accessible on the floor of the cabin, located precisely where you expect them to be.



### Differential lock

Locking the differential ensures that the wheels rotate at the same speed to facilitate turning and to prevent twisting of the wheel axle.



### Yanmar diesel engine

The Stage V Yanmar engine delivers high torque and efficient revs compared to competitors in its class to maximize fuel efficiency.



### Hydraulic speed control handle

The handle enables you to adjust the hydraulic descent speed, switching seamlessly between low and high speeds.



### 2-range HST (TC25NH)

The 2-speed HST makes it easy to maneuver the tractor forward and backward with the pedals.



### Foldable ROPS for storage in low-ceiling structures

The Roll Over Protective Structure (ROPS) of the tractor is designed to be folded, allowing for easy storage in low-ceiling garages or sheds.

# Technical specifications

ENGINE	
Engine manufacturer	Yanmar 3TNV80F (NXDKTFX)
Type	Natural aspiration
Gross engine power	24.2 PS   17.8 kW
PTO power	19.0 PS   14.0 kW
Rated engine speed	3000 rpm
No. of cylinders	3
Displacement	1267 cc   77.3 cu. in.
Air cleaner	Single dry
Alternator	12V, 40A
Fuel system	IDI
POWERTRAIN	
Transmission type	Mechanical / HST
No. of speeds	F2 x R2 (Manual) / 2 range (HST)
Max. traveling speed	20.94 km/h   13.01 mph
Brakes	Wet disc
Steering	Hydrostatic
CAPACITIES	
Fuel tank	20 L   5.3 gal
Coolant	3.5 L   3.7 qt
Crankcase	3.0 L   3.2 qt
Transmission/Hydraulics system	14 L   3.7 gal
Front axle	3.5 L   3.7 qt

PTO	
PTO type	Independent
PTO control	Electric/Hydro
PTO rear	540 rpm
HYDRAULIC SYSTEM	
Pump type	Single gear pump
Implement flow	15.82 L/min
Steering flow	10.49 L/min
Total flow	26.30 L/min
Category, 3-point hitch	Cat 1
Hitch lift capacity	730.1 kg   1610 lb
Hitch lift capacity at 24 inches behind link ends	663.9 kg   1463.6 lb
Lift control type	Position
No. of standard remote valves	2
DIMENSIONS & WEIGHTS	
Overall length with 3-point hitch	2395 mm   94.3 in.
Overall width	1170 mm   46.1 in.
Wheelbase	1460 mm   57.5 in.
Height to top of ROPS	2500 mm   98.4 in.
Height to top of cabin	-
Min. ground clearance	240 mm   9.4 in.
Min. turn radius with brakes	(L) 2390 mm   94.09 in. / (R) 2370 mm   93.31 in.
Min. turn radius without brakes	(L) 2840 mm   111.81 in. / (R) 2820 mm   111.02 in.
Weight with ROPS	835 kg   1840.0 lb (Manual) / 820 kg   1807.8 lb (HST)
Weight with cab	-
Track width	F: 900 mm / R: 925 mm
STANDARD TIRES	
Agricultural - Front	6.0-12
Agricultural - Rear	9.5-16
Industrial - Front	20x8.0-10
Industrial - Rear	27x12.5-15



# Designed for your world

TYM creates tractors that bring together alluring form, advanced function and accessible value. Through Korean expertise in design, engineering and manufacturing, the company helps owners overcome every obstacle as they shape the world around them.

Headquartered in Korea with distribution across North America, Europe, and Asia, and assembly operations in the USA, TYM has been empowering customers for over 70 years.

[www.tym.world](http://www.tym.world)