

K75E

Compact Utility, Series 4
73.9 PS



A compact utility tractor that boasts exceptional power and premium features

This K75E tractor features car-like comforts on top of its formidable performance specs. Equipped with a powerful 3.4 liter turbo engine rated at 75 horsepower, this compact utility tractor is the most powerful tractor in its class.



1. Power shuttle



3. De-clutch



2. Hydraulic tilt / telescoping power steering



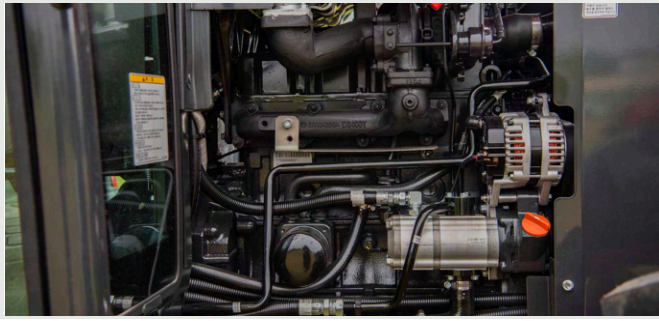
5. Electronic lift control



4. Rear external implement control



6. Multi-functional buttons



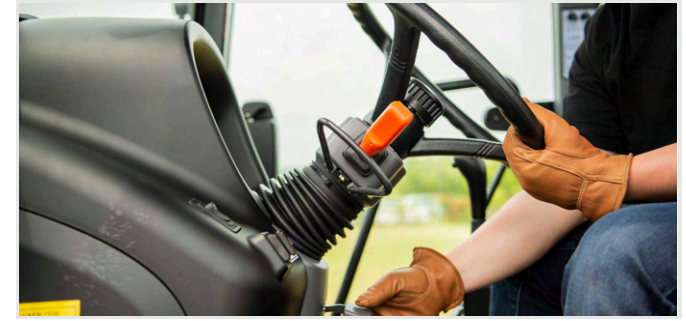
3.4L high-output TYM diesel engine

Equipped with a 3.4L turbocharged engine, the most powerful in its class, this tractor boasts power and durability. With its robust body and engine power, you'll be able to get the job done with ease.



High-capacity fuel tank

High-capacity fuel tanks allow long operating times without refueling and improves engine fuel efficiency.



Tilt steering wheel

The tilt steering wheel allows the operator to adjust to their best driving position for greater comfort.



Multi-functional buttons

The PTO and the implement can be easily controlled with the multi-functional buttons. The operator can also control height, horizontal level, auto-level sensitivity, and Back-Up & Turn-Up functions.



Deluxe cabin with AC and heater

Standard AC and heater and helps operators work comfortably regardless of the season. It also increases the work efficiency by increasing visibility.



DPF Regeneration System (Electronic Exhaust Valve)

Lowers fuel consumption and the efficiently regenerates the diesel particulate filter.

Technical specifications

ENGINE	
Engine manufacturer	TYM T3400T
Type	Turbocharger
Gross engine power	73.9 PS 54.4 kW
PTO power	63.9 PS 47 kW
Rated engine speed	2500 rpm
No. of cylinders	4
Displacement	3409 cc 208.02 cu. in.
Air cleaner	Dry element
Alternator	12V, 70A
Fuel system	DI
POWERTRAIN	
Transmission type	Power shuttle
No. of speeds	F16 × R16
Max. traveling speed	33.18 km/h 20.61 mph
Brakes	Wet disc
Steering	Hydrostatic
Clutch	Wet disc
CAPACITIES	
Fuel tank	90 L 23.77 gal
Coolant	8.6 L 9.08 qt
Crankcase	9 L 9.51 qt
Transmission/Hydraulics system	63 L 16.64 gal
Front axle	12 L 12.68 qt

PTO	
PTO type	Independent
PTO control	Electric/Hydro
PTO rear	540/750/1000 rpm
HYDRAULIC SYSTEM	
Pump type	Gear pump
Implement flow	61.8 L/min 16.36 gpm
Steering flow	37.1 L/min 9.8 gpm
Total flow	98.9 L/min 26.13 gpm
Category, 3-point hitch	Cat 2
Hitch lift capacity	2375 kg 5235.97 lb
Hitch lift capacity at 24 inches behind link ends	1809 kg 3988 lb
Lift control type	Position/Draft/TBS
No. of standard remote valves	6
DIMENSIONS & WEIGHTS	
Overall length with 3-point hitch	3660 mm 144.09 in.
Overall width	1890 mm 74.40 in.
Wheelbase	2200 mm 86.6 in.
Height to top of ROPS	-
Height to top of cabin	2720 mm 107.08 in.
Min. ground clearance	420 mm 16.53 in.
Min. turn radius with brakes	(L) 3550 mm 139.76 in. / (R) 3610 mm 142.13 in.
Min. turn radius without brakes	(L) 4520 mm 177.95 in. / (R) 4530 mm 178.35 in.
Weight with cab	2935 kg 6470.56 lb
Weight with ROPS	-
Track width	F: 1445 mm / R: 1440 mm
STANDARD TIRES	
Agricultural - Front	11.2-24
Agricultural - Rear	16.9-30

KJL750E Front-End Loader

Attachments

The TYM KJL750E front-end loader raises the bar in material handling and productivity. Providing an impressive lift height and capacity, the KJL750E complements the power and performance of compatible TYM K75E compact tractors.

Lift height	3115 mm 122.6 in.
Lift capacity at pivot point (max. height)	940 kgf 2072 lb
Self leveling	Available

CAPACITIES & REACH	
Lift height	3115 mm 122.6 in.
Max. lift height under level bucket	2902 mm 114.3 in.
Clearance with bucket dumped	2422 mm 95.4 in.
Reach at maximum lift height	168 mm 6.6 in.
Max. dump angle	80°
Reach with bucket on ground	2155 mm 84.8 in.
Max. rollback angle	50°
Digging depth	130 mm 5.1 in.
Lift capacity at pivot point (max. height)	940 kgf 2072 lb
Breakout force at ground level, pivot pins	1343 kgf 2961 lb
Bucket rollback force at ground line	1556 kgf 3430 lb
Self leveling	Available
Relief valve setting (loader control valve)	165 kg/sq. cm 2347 psi
Compatible bucket sizes	66" Front-end loader bucket
DIMENSIONS & WEIGHTS	
Overall height in carry position	1670 mm 65.7 in.
Depth of Attachment (to the back of the inner shell)	549 mm 21.6 in.



Height of Attachment	510 mm 20.1 in.
Length of Attachment (to pivot pin)	665 mm 26.2 in.
Weight of boom & quick attach mechanism (1)	238 kg 525 lb
Weight of mounting frame (2)	85 kg 187 lb
Weight of bucket (3)	108 kg 238 lb
Loader total weight (1+2+3)	431 kg 950 lb
Lift cylinder	60 × 40 mm 2.4 × 1.6 in.
Bucket cylinder	60 × 35 mm 2.4 × 1.4 in.
Attachment used for specification	1570 mm 61.8 in.

CYCLE TIMES	
Boom raising time	4.5 sec
Boom lowering time	3.1 sec
Bucket rollback time	2.2 sec
Bucket dumping time	3.0 sec

COMPATIBLE BUCKET SIZES	
TYM's multi-purpose buckets are capable of bulldozing, scraping, loading, metering, moving, and clamping material.	
66" Front-End Loader bucket	



Designed for your world

TYM creates tractors that bring together alluring form, advanced function and accessible value. Through Korean expertise in design, engineering and manufacturing, the company helps owners overcome every obstacle as they shape the world around them.

Headquartered in Korea with distribution across North America, Europe, and Asia, and assembly operations in the USA, TYM has been empowering customers for over 70 years.

www.tym.world