

2024 Catalog

Series 2

Compact Tractors

34.2 - 48.3 PS



For distribution and sales in the South Korean market only

Series 2 Compact Tractors

The Series 2 tractors are built to take on more demanding tasks while maintaining the

smallest frame possible to tackle routine jobs and tough challenges on your property.



T36

Engine power 34.2 ps
Lift capacity 1197 kg



K42

Engine power 43 ps
Lift capacity 1340 kg



K48L

Engine power 48 ps
Lift capacity 1365 kg



K48

Engine power 48 ps
Lift capacity 1365 kg



K48C

Engine power 48 ps
Lift capacity 1365 kg



T48

Engine power 48.3 ps
Lift capacity 1220 kg

Built to tackle a variety of tasks on your land

The Series 2 tractors have enhanced performance capabilities while maintaining compact frames. Functional design and precision engineering come together to promote productivity, from the Tier 4-certified engine to the ergonomically configured operator platform.

Use a Series 2 tractor to maintain a healthy lawn, build a home garden, take care of yard work, or create a lively home farm. Front-end loader, mid-mount mower and rear hitch linkages enable you to attach a variety of attachments and do more per cycle.

Most popular applications



Arable Farming



Construction



Snow Clearing



Landscaping



All the right features to get the job done



Yanmar diesel engine

This engine maximizes fuel efficiency by delivering high torque and efficient revs compared to similar models in its class. The water-cooled engine warms up quickly and effectively stabilizes the temperature while the tractor is running.



Dual filter air cleaner for engine longevity

The tractor comes with an additional filter to protect the engine from harmful dust and particles, drastically extending the engine life.



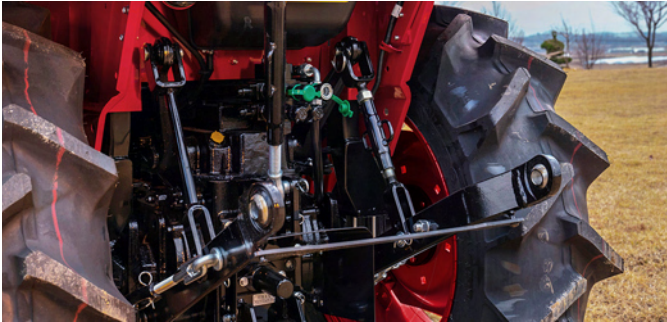
Cast iron components for stronger connections

The rear of the rear of this tractor features sturdy cast-iron components to connect a range of attachments and perform with heavier loads. The material enhances efficiency of the hydraulics and helps increase component lifecycles.



Convenient one-touch hood open

The tractor hood can be opened with the pull of a lever, providing easy access for routine inspection and maintenance of the engine and systems.



3-point hitch with powerful lift capacity

The 3-point linkage on the rear has an impressive lift capacity that reaches the end ball joints. The rear PTO control can be used to adjust rpm based on the task, increasing it for more intensive applications like slashing and digging.



High-capacity fuel tank for time-intensive work

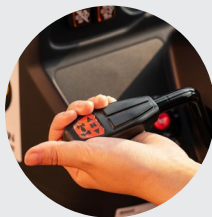
The high-capacity fuel tank allows the tractor to operate for longer periods without stopping to refuel. Paired with a fuel-efficient engine, this enables uninterrupted and efficient operations during the busiest seasons.

T36

A compact tractor built for tough work in tight spaces



1. DPF Regeneration



2. Forward/reverse shuttle lever



3. ROPS

Key specifications:

Engine power
34.2 PS | 25.5 kW

Engine manufacturer
Yanmar 3TNV88C (KKTF)

Lift capacity
1197 kg | 2639 lb

PTO power
26.4 PS | 19.7 kW



4. Digital Instrument Panel



5. PTO on/off switch



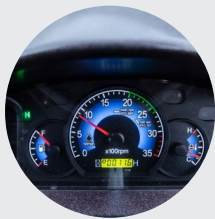
6. Main shift lever

K42

A sub-compact tractor that doesn't compromise on performance



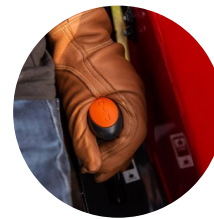
1. Standard ballast weights



2. Digital Instrument Panel



3. PTO safety switch



4. PTO Transmission lever



5. External hydraulic control lever



6. External hydraulic control lever

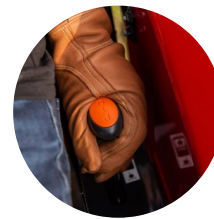
Key specifications:

Engine power
43 PS | 31.5 kW

Engine manufacturer
TYM T2000

Lift capacity
1340 kg | 2954 lb

PTO power
37 PS | 27 kW



4. PTO Transmission lever



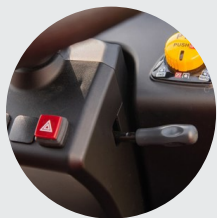
5. External hydraulic control lever



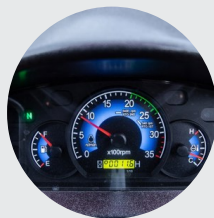
6. External hydraulic control lever

K48L

A compact tractor that doesn't compromise on performance



1. Tilt steering wheel



2. Digital Instrument Panel



3. PTO switch

Key specifications:

Engine power
48 PS | 35.5 kW

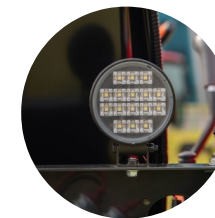
Engine manufacturer
TYM T2300

Lift capacity
1365 kg | 3009 lb

PTO power
41 PS | 30 kW



4. External hydraulic control lever



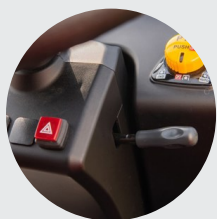
5. Rear LED work light



6. Rear external hydraulic valve

K48

A compact tractor that doesn't compromise on performance



1. Tilt steering wheel



2. Digital Instrument Panel



3. PTO switch

Key specifications:

Engine power
48 PS | 35.5 kW

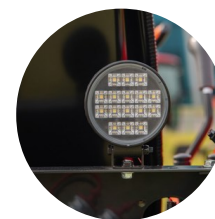
Engine manufacturer
TYM T2300

Lift capacity
1365 kg | 3009 lb

PTO power
41 PS | 30 kW



4. External hydraulic control lever



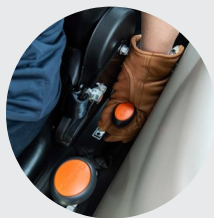
5. Rear LED work light



6. Rear external hydraulic valve

K48C

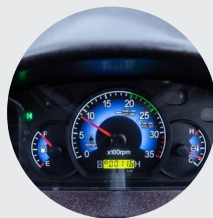
A compact tractor that doesn't compromise on performance



1. 3-speed PTO



2. Loader joystick



3. Digital Instrument Panel

Key specifications:

Engine power
48 PS | 35.5 kW

Engine manufacturer
TYM T2300

Lift capacity
1365 kg | 3009 lb

PTO power
41 PS | 30 kW



4. PTO switch



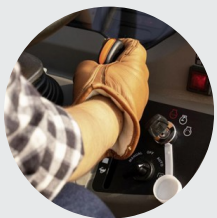
5. Tilt steering wheel



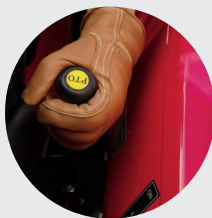
6. Forward/reverse shuttle lever

T48

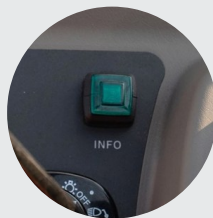
A compact tractor that doesn't compromise on performance



1. Throttle lever



2. PTO Shift lever



3. Functional switch

Key specifications:

Engine power
48.3 PS | 35.5 kW

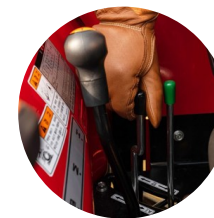
Engine manufacturer
TYM T2300

Lift capacity
1220 kg | 2689.64 lb

PTO power
35 PS | 26 kW



4. Rear external position lever



5. External hydraulics control lever



6. Shuttle lever

Specification Guide

| MODEL | T36 | K42 | K48L | K48 |
|---|---|---|---|---|
| ENGINE | | | | |
| Engine manufacturer | Yanmar 3TNV88C (KKTF) | TYM T2000 | TYM T2300 | TYM T2300 |
| Type | Natural aspiration | Turbocharger | Natural aspiration | Natural aspiration |
| Engine power | 34.2 PS 25.5 kW | 43 PS 31.5 kW | 48 PS 35.5 kW | 48 PS 35.5 kW |
| PTO power | 26.4 PS 19.7 kW | 37 PS 27 kW | 41 PS 30 kW | 41 PS 30 kW |
| Rated engine speed | 2800 rpm | 2600 rpm | 2600 rpm | 2600 rpm |
| No. of cylinders | 3 | 4 | 4 | 4 |
| Displacement | 1642 cc 100.2 cu. in. | 2084 cc 127.17 cu. in. | 2287 cc 139.56 cu. in. | 2287 cc 139.56 cu. in. |
| Air cleaner | Dual dry | Dry element | Dry element | Dry element |
| Alternator | 12V, 70A | 12V, 50A | 12V, 50A | 12V, 50A |
| Fuel system | CRDI | IDI | IDI | IDI |
| POWERTRAIN | | | | |
| Transmission type | Mechanical | Synchro-shuttle | Synchro-shuttle | Synchro-shuttle |
| No. of speeds | F12 x R12 | F12 x R12 | F12 x R12 | F12 x R12 |
| Max. traveling speed | 24.8 km/h 15.41 mph | 23.52 km/h 14.61 mph | 25.2 km/h 15.65 mph | 25.2 km/h 15.65 mph |
| Brakes | Wet disc | Wet disc | Wet disc | Wet disc |
| Steering | Hydrostatic | Hydrostatic | Hydrostatic | Hydrostatic |
| Clutch | Dry disc | Dry disc | Dry disc | Dry disc |
| HYDRAULIC SYSTEM | | | | |
| Pump type | Dual gear pump | Gear pump | Gear pump | Gear pump |
| Implement flow | 21.62 L/min 5.7 gpm | 43.2 L/min 11.4 gpm | 43.2 L/min 11.41 gpm | 43.2 L/min 11.41 gpm |
| Steering flow | 15.6 L/min 4.1 gpm | 19.4 L/min 5.1 gpm | 19.4 L/min 5.13 gpm | 19.4 L/min 5.13 gpm |
| Total flow | 37.2 L/min 9.8 gpm | 62.6 L/min 16.5 gpm | 62.6 L/min 16.54 gpm | 62.6 L/min 16.54 gpm |
| Category, 3-point hitch | Cat 1 | Cat 1 | Cat1 | Cat 1 |
| Hitch lift capacity | 1197 kg 2639 lb | 1340 kg 2954 lb | 1365 kg 3009 lb | 1365 kg 3009 lb |
| Hitch lift capacity at 24 inches behind link ends | 706 kg 1558 lb | 746 kg 1645 lb | 637 kg 1404 lb | 637 kg 1404 lb |
| Lift control type | Position | Position/Draft | Position/Draft | Position/Draft |
| No. of standard remote valves | 4 Port | 4 Port | 4 | 4 |
| PTO | | | | |
| PTO type | Independent | Independent | Independent | Independent |
| PTO control | Electric/Hydro | Electric/Hydro | Electric/Hydro | Electric/Hydro |
| PTO rear | 540/750/1000 rpm | 540/750 rpm | 540/750/1000 rpm | 540/750/1000 rpm |
| CAPACITIES | | | | |
| Fuel tank | 33 L 8.71 gal | 27 L 7.13 gal | 27 L 7.13 gal | 27 L 7.13 gal |
| Coolant | 5.3 L 5.6 qt | 3 L 3.17 qt | 3.0 L 3.17 qt | 3.0 L 3.17 qt |
| Crankcase | 3.2 L 3.4 qt | 4.5 L 4.75 qt | 4.5 L 4.75 qt | 4.5 L 4.75 qt |
| Transmission/Hydraulics system | 32 L 8.5 gal | 34 L 8.98 gal | 34 L 8.98 gal | 34 L 8.98 gal |
| Front axle | 8.2 L 8.7 qt | 6.4 L 6.76 qt | 6.4 L 6.76 qt | 6.4 L 6.76 qt |
| DIMENSIONS & WEIGHTS | | | | |
| Overall length with 3-point hitch | 3010 mm 118.5 in. | 3090 mm 121.65 in. | 3160 mm 124.40 in. | 3160 mm 124.40 in. |
| Overall width | 1410 mm 55.5 in. | 1415 mm 55.70 in. | 1535 mm 60.43 in. | 1535 mm 60.43 in. |
| Wheelbase | 1640 mm 64.6 in. | 1670 mm 65.74 in. | 1720 mm 67.71 in. | 1720 mm 67.71 in. |
| Height to top of ROPS | 2590 mm 101.9 in. | 2360 mm 92.91 in. | 2450 mm 96.45 in. | 2450 mm 96.45 in. |
| Height to top of cabin | - | - | - | - |
| Min. ground clearance | 360 mm 14.2 in. | 365 mm 14.37 in. | 395 mm 15.55 in. | 395 mm 15.55 in. |
| Min. turn radius with brakes | (L) 2600 mm 102.36 in. / (R) 2620 mm 103.15 in. | (L) 2290 mm 90.16 in. / (R) 2310 mm 90.94 in. | (L) 2490 mm 98.03 in. / (R) 2390 mm 94.09 in. | (L) 2490 mm 98.03 in. / (R) 2390 mm 94.09 in. |
| Min. turn radius without brakes | (L) 2850 mm 112.20 in. / (R) 2890 mm 113.78 in. | (L) 3080 mm 121.26 in. / (R) 3120 mm 122.83 in. | (L) 3170 mm 124.80 in. / (R) 3080 mm 121.26 in. | (L) 3170 mm 124.80 in. / (R) 3080 mm 121.26 in. |
| Weight with ROPS | 1475 kg 3252 lb | 1535 kg 3384.09 lb | 1580 kg 3483.30 lb | 1580 kg 3483.30 lb |
| Weight with cab | - | - | - | - |
| Track width | F: 1137 mm / R: 1040 mm | F: 1220 mm / R: 1125 mm | F: 1270 mm / R: 1195 mm | F: 1270 mm / R: 1195 mm |
| STANDARD TIRES | | | | |
| Agricultural - Front | 8.0-16 | 8-16 | 7-16 | 9.5-16 |
| Agricultural - Rear | 12.4-24 | 12.4-24 | 11.2-24 | 13.6-24 |

Specification Guide

| MODEL | K48C | T48 |
|---|---|---|
| ENGINE | | |
| Engine manufacturer | TYM T2300 | TYM T2300 |
| Type | Natural aspiration | Natural aspiration |
| Engine power | 48 PS 35.5 kW | 48.3 PS 35.5 kW |
| PTO power | 41 PS 30 kW | 35 PS 26 kW |
| Rated engine speed | 2600 rpm | 2600 rpm |
| No. of cylinders | 4 | 4 |
| Displacement | 2287 cc 139.56 cu. in. | 2286 cc 139.5 cu. in. |
| Air cleaner | Dry element | Dual dry |
| Alternator | 12V, 70A | 12V, 70A |
| Fuel system | IDI | IDI |
| POWERTRAIN | | |
| Transmission type | Synchro-shuttle | Mechanical |
| No. of speeds | F12 × R12 | F12 × R12 |
| Max. traveling speed | 25.2 km/h 15.65 mph | 20.03 km/h 12.44 mph |
| Brakes | Wet disc | Wet disc |
| Steering | Hydrostatic | Hydrostatic |
| Clutch | Dry disc | Dry disc |
| HYDRAULIC SYSTEM | | |
| Pump type | Gear pump | Dual gear pump |
| Implement flow | 43.2 L/min 11.41 gpm | 29 L/min 7.66 gpm |
| Steering flow | 19.4 L/min 5.13 gpm | 16.09 L/min 4.25 gpm |
| Total flow | 62.6 L/min 16.54 gpm | 45.08 L/min 11.91 gpm |
| Category, 3-point hitch | Cat 1 | Cat 1 |
| Hitch lift capacity | 1365 kg 3009 lb | 1220 kg 2689.64 lb |
| Hitch lift capacity at 24 inches behind link ends | 637 kg 1404 lb | 684 kg 1508 lb |
| Lift control type | Position/Draft | Position |
| No. of standard remote valves | 4 | 4 |
| PTO | | |
| PTO type | Independent | Independent |
| PTO control | Electric/Hydro | Electric/Hydro |
| PTO rear | 540/750/1000 rpm | 540/750 rpm |
| CAPACITIES | | |
| Fuel tank | 50 L 13.20 gal | 34 L 9.0 gal |
| Coolant | 3 L 3.17 qt | 6.5 L 6.9 qt |
| Crankcase | 4.5 L 4.75 qt | 6.4 L 6.8 qt |
| Transmission/Hydraulics system | 34 L 8.98 gal | 32 L 8.5 gal |
| Front axle | 6.4 L 6.76 qt | 8.21 L 2.17 qt |
| DIMENSIONS & WEIGHTS | | |
| Overall length with 3-point hitch | 3325 mm 130.90 in. | 3220 mm 126.77 in. |
| Overall width | 1550 mm 61.02 in. | 1330 mm 54.5 in. |
| Wheelbase | 1750 mm 68.89 in. | 2155 mm 84.84 in. |
| Height to top of ROPS | - | 2560 mm 100.78 in. |
| Height to top of cabin | 2410 mm 94.88 in. | - |
| Min. ground clearance | 395 mm 15.55 in. | 345 mm 13.58 in. |
| Min. turn radius with brakes | (L) 2550 mm 100.39 in. / (R) 2550 mm 100.39 in. | (L) 2330 mm 91.73 in. / (R) 2290 mm 90.16 in. |
| Min. turn radius without brakes | (L) 2920 mm 114.96 in. / (R) 2950 mm 116.14 in. | (L) 2710 mm 106.69 in. / (R) 2680 mm 105.51 in. |
| Weight with ROPS | - | 1520 kg 3351.02 lb |
| Weight with cab | 1810 kg 3990.36 lb | - |
| Track width | F: 1270 mm / R: 1210 mm | F: 1140 mm / R: 1040 mm |
| STANDARD TIRES | | |
| Agricultural - Front | 9.5-16 | 7-16 |
| Agricultural - Rear | 13.6-24 | 11.2-24 |



Designed for your world

TYM creates tractors that bring together alluring form, advanced function and accessible value. Through Korean expertise in design, engineering and manufacturing, the company helps owners overcome every obstacle as they shape the world around them.

Headquartered in Korea with distribution across North America, Europe, and Asia, and assembly operations in the USA, TYM has been empowering customers for over 70 years.

www.tym.world