

TJV755

Import, ISEKI
74.3 PS



An imported utility tractor that offers power at an unbeatable value

The TJV755 is the standard imported tractor resulting from TYM's partnership with Iseki, one of Japan's largest and most established agricultural manufacturers. This utility tractor delivers the power you need without compromising quality.



1. Advanced Digital Instrument Panel



3. Green Mode



2. Main shift 8 range power shift



4. External hydraulic lever (6 port)



5. Dial switch lever



6. Tractor work lights



High-powered Deutz engine

Built on precise German engineering, the Deutz engine uses Diesel Oxidation Catalysts (DOC) to convert carbon and particulate matter into less harmful emissions. This eliminates the need for regeneration cycles, minimizing maintenance requirements, downtime and the risk of repair.



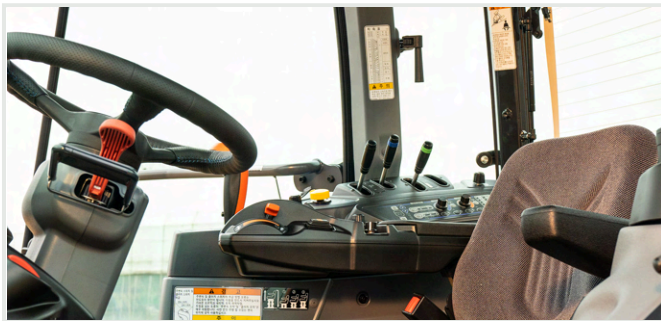
Escort light

The work lamp stays on for an additional 30 seconds after turning off the engine to ensure safe disembarkation during night work.



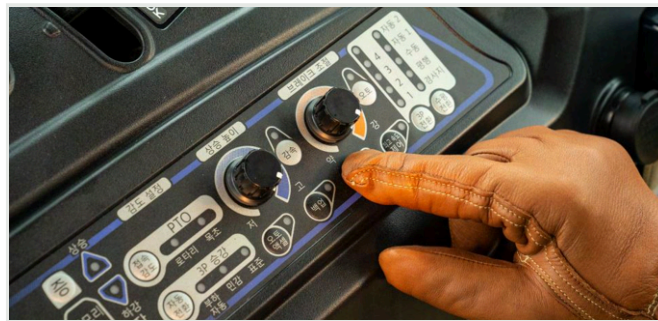
3-point hitch with increased lift capacity

Take advantage of the enhanced lift capacity to tackle challenging tasks such as rotary tilling and weeding by effectively controlling the attachment's RPM using the PTO lever.



Deluxe cabin with climate control

This tractor offers enhanced visibility with standard heating and AC, along with easy entry and exit through both side doors. It comes equipped with a range of modern amenities to optimize operator comfort, allowing them to carry out tasks safely and productively in varying weather conditions.



Electric/Hydro hitch control system

This tractor comes equipped with a Bosch electro-hydraulic control (EHC) system for the rear hitch. The system allows for faster and more accurate responses to changes in power and position, enabling operators to lift and lower the hitch gear to exacting specifications. The system is especially useful for row crop farming, allowing more precise tillage and boosting the quality of harvest.



Power steering with hydraulic tilt for optimal ergonomics

The power steering of this tractor comes with a tilt function that allows operators to move the steering vertically to find the ideal position for easier turning. Other features like adjustable suspension seating and the hydraulic axle configuration also minimize fatigue and contribute to a more comfortable driving experience.

Technical specifications

ENGINE	
Engine manufacturer	Deutz TCD 2.9L4
Type	Turbocharger
Gross engine power	74.3 PS 55.4 kW
PTO power	60.3 PS 45.0 kW
Rated engine speed	2200 rpm
No. of cylinders	4
Displacement	2925 cc 178.5 cu. in.
Air cleaner	Dual dry
Alternator	12V, 72A
Fuel system	CRDI
POWERTRAIN	
Transmission type	Power shuttle & 8-speed shift
No. of speeds	F24 × R24
Max. traveling speed	33.1 km/h 20.6 mph
Brakes	Wet disc
Steering	Hydrostatic
Clutch	Dual wet
CAPACITIES	
Fuel tank	120 L 31.7 gal
Coolant	12 L 12.6 qt
Crankcase	9 L 9.5 qt
Transmission/Hydraulics system	55.5 L 14.6 gal
Front axle	7.9 L 2.1 gal

PTO	
PTO type	Independent
PTO control	Electric/Hydro
PTO rear	565/793/1014/540(Reverse) rpm
HYDRAULIC SYSTEM	
Pump type	Dual gear pump
Implement flow	51.9 L/min 13.7 gal
Steering flow	31.79 L/min 8.4 gal
Total flow	51.9 L/min 13.71 gal
Category, 3-point hitch	Cat 2
Hitch lift capacity	2090 kg 4607.7 lb
Hitch lift capacity at 24 inches behind link ends	1657 kg 3653 lb
Lift control type	Position/Draft/TBS
No. of standard remote valves	6
DIMENSIONS & WEIGHTS	
Overall length with 3-point hitch	3395 mm 133.7 in.
Overall width	1895 mm 74.6 in.
Wheelbase	2215 mm 87.2 in.
Height to top of cabin	2740 mm 107.8 in.
Height to top of ROPS	-
Min. ground clearance	445 mm 17.5 in.
Min. turn radius with brakes	(L) 3880 mm 152.76 in. / (R) 3790 mm 149.21 in.
Min. turn radius without brakes	(L) 4620 mm 181.89 in. / (R) 4450 mm 175.20 in.
Weight with cab	3230 kg 7120.9 lb
Weight with ROPS	-
Track width	F: 1370 mm / R: 1455 mm
STANDARD TIRES	
Agricultural - Front	11.2-20
Agricultural - Rear	16.9-30



Designed for your world

TYM creates tractors that bring together alluring form, advanced function and accessible value. Through Korean expertise in design, engineering and manufacturing, the company helps owners overcome every obstacle as they shape the world around them.

Headquartered in Korea with distribution across North America, Europe, and Asia, and assembly operations in the USA, TYM has been empowering customers for over 70 years.

www.tym.world