

K75

Compact Utility, Series 4
73.7 PS



A compact utility tractor that boasts exceptional power and premium features

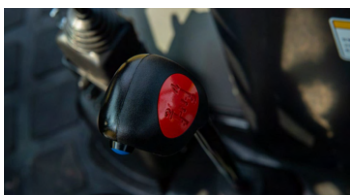
The K75 features car-like comforts on top of its formidable performance specs. It reduces operator effort with smart features and comprehensive controls like the sunroof and horizontal level control.



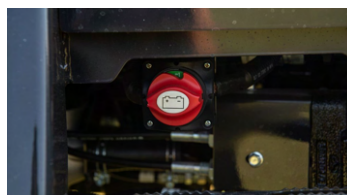
1. Power shuttle



3. Electronic lift control



2. De-clutch



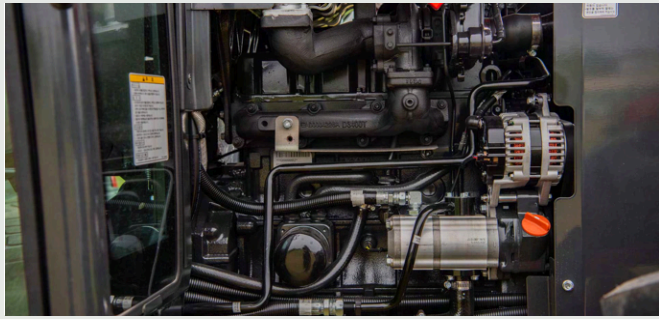
4. Battery shut-off switch



5. Rear external implement control



6. Hydraulic top link



4-cylinder high-output TYM diesel engine

Equipped with a powerful 4-cylinder engine, this tractor boasts the power of a mid-sized tractor while maintaining a compact size.



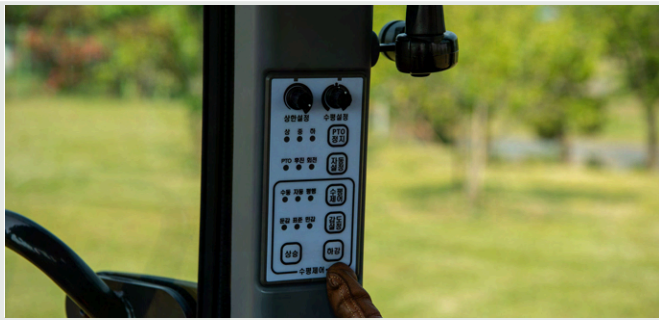
High-capacity fuel tank

High-capacity fuel tanks allow long operating times without refueling and improves engine fuel efficiency.



Tilt steering wheel

The tilt steering wheel allows the operator to adjust to their best driving position for greater comfort.



Multi-functional buttons

The PTO and the implement can be easily controlled with the multi-functional buttons. The operator can also control height, horizontal level, auto-level sensitivity, and Back-Up & Turn-Up functions.



High-capacity external hydraulic cylinder

A high-capacity external hydraulic cylinder usually found on utility tractors can exert up to 2 tons of lifting power.



Standard Smart Package

Equipped with an automotive start/stop button and Smart Key 1. Remote start/stop 2. Rear implement remote control 3. LED monitor 4. Rear-mounted camera.

Technical specifications

| ENGINE | |
|--------------------------------|--------------------------|
| Engine manufacturer | TYM T2400TCI |
| Type | Turbocharger |
| Gross engine power | 73.7 PS 55 kW |
| PTO power | 64.36 PS 48 kW |
| Rated engine speed | 2600 rpm |
| No. of cylinders | 4 |
| Displacement | 2392 cc 145.96 cu. in. |
| Air cleaner | Dry element |
| Alternator | 12V, 70A |
| Fuel system | DI |
| POWERTRAIN | |
| Transmission type | Power shuttle |
| No. of speeds | F16 × R16 |
| Max. traveling speed | 39.6 km/h 24.60 mph |
| Brakes | Wet disc |
| Steering | Hydrostatic |
| Clutch | Wet disc |
| CAPACITIES | |
| Fuel tank | 90 L 23.77 gal |
| Coolant | 8.6 L 9.08 qt |
| Crankcase | 6.4 L 6.76 qt |
| Transmission/Hydraulics system | 63 L 16.64 gal |
| Front axle | 12 L 12.68 qt |

| PTO | |
|---|---|
| PTO type | Independent |
| PTO control | Electric/Hydro |
| PTO rear | 540/750/1000 rpm |
| HYDRAULIC SYSTEM | |
| Pump type | Gear pump |
| Implement flow | 46.8 L/min 12.4 gpm |
| Steering flow | 32.4 L/min 8.56 gpm |
| Total flow | 79.2 L/min 20.9 gpm |
| Category, 3-point hitch | Cat 2 |
| Hitch lift capacity | 2424 kg 5344 lb |
| Hitch lift capacity at 24 inches behind link ends | 1880 kg 4144.69 lb |
| Lift control type | Position/Draft/TBS |
| No. of standard remote valves | 6 |
| DIMENSIONS & WEIGHTS | |
| Overall length with 3-point hitch | 3850 mm 151.57 in. |
| Overall width | 1890 mm 74.40 in. |
| Wheelbase | 2200 mm 86.6 in. |
| Height to top of ROPS | - |
| Height to top of cabin | 2715 mm 106.88 in. |
| Min. ground clearance | 430 mm 16.9 in. |
| Min. turn radius with brakes | (L) 3160 mm 124.41 in. / (R) 3450 mm 135.83 in. |
| Min. turn radius without brakes | (L) 4110 mm 161.81 in. / (R) 3970 mm 156.30 in. |
| Weight with cab | 2945 kg 6481.61 lb |
| Weight with ROPS | - |
| Track width | F: 1520 mm / R: 1450 mm |
| STANDARD TIRES | |
| Agricultural - Front | 11.2-24 |
| Agricultural - Rear | 16.9-30 |

KJL75 Front-End Loader

Attachments

The TYM KJL75 front-end loader raises the bar in material handling and productivity. Providing an impressive lift height and capacity, the KJL75 complements the power and performance of compatible TYM K75 compact tractors.

| | |
|--|---------------------|
| Lift height | 3115 mm 122.6 in. |
| Lift capacity at pivot point (max. height) | 940 kgf 2072 lb |
| Self leveling | Available |

| CAPACITIES & REACH | |
|--|-----------------------------|
| Lift height | 3115 mm 122.6 in. |
| Max. lift height under level bucket | 2902 mm 114.3 in. |
| Clearance with bucket dumped | 2422 mm 95.4 in. |
| Reach at maximum lift height | 168 mm 6.6 in. |
| Max. dump angle | 80° |
| Reach with bucket on ground | 2155 mm 84.8 in. |
| Max. rollback angle | 50° |
| Digging depth | 130 mm 5.1 in. |
| Lift capacity at pivot point (max. height) | 940 kgf 2072 lb |
| Breakout force at ground level, pivot pins | 1343 kgf 2961 lb |
| Bucket rollback force at ground line | 1556 kgf 3430 lb |
| Self leveling | Available |
| Relief valve setting (loader control valve) | 165 kg/sq. cm 2347 psi |
| Compatible bucket sizes | 66" Front-end loader bucket |
| DIMENSIONS & WEIGHTS | |
| Overall height in carry position | 1670 mm 65.7 in. |
| Depth of Attachment (to the back of the inner shell) | 549 mm 21.6 in. |



| | |
|---|----------------------------|
| Height of Attachment | 510 mm 20.1 in. |
| Length of Attachment (to pivot pin) | 665 mm 26.2 in. |
| Weight of boom & quick attach mechanism (1) | 238 kg 525 lb |
| Weight of mounting frame (2) | 85 kg 187 lb |
| Weight of bucket (3) | 108 kg 238 lb |
| Loader total weight (1+2+3) | 431 kg 950 lb |
| Lift cylinder | 60 × 40 mm 2.4 × 1.6 in. |
| Bucket cylinder | 60 × 35 mm 2.4 × 1.4 in. |
| Attachment used for specification | 1570 mm 61.8 in. |

| CYCLE TIMES | |
|----------------------|---------|
| Boom raising time | 4.5 sec |
| Boom lowering time | 3.1 sec |
| Bucket rollback time | 2.2 sec |
| Bucket dumping time | 3.0 sec |

| COMPATIBLE BUCKET SIZES | |
|--|--|
| TYM's multi-purpose buckets are capable of bulldozing, scraping, loading, metering, moving, and clamping material. | |
| 66" Front-End Loader bucket | |



Designed for your world

TYM creates tractors that bring together alluring form, advanced function and accessible value. Through Korean expertise in design, engineering and manufacturing, the company helps owners overcome every obstacle as they shape the world around them.

Headquartered in Korea with distribution across North America, Europe, and Asia, and assembly operations in the USA, TYM has been empowering customers for over 70 years.

www.tym.world