

# K57E

Compact, Series 3  
58 PS



# A compact tractor with the full package that meets your needs

With a balance of high performance and efficiency, the K57E is an exceptional multipurpose tractor. It has the entire package, delivering the essentials and more without compromising on value.



1. Streamlined hood



3. Electronic instrumental panel



5. Rear LED work light



2. 8 standard ballast weights

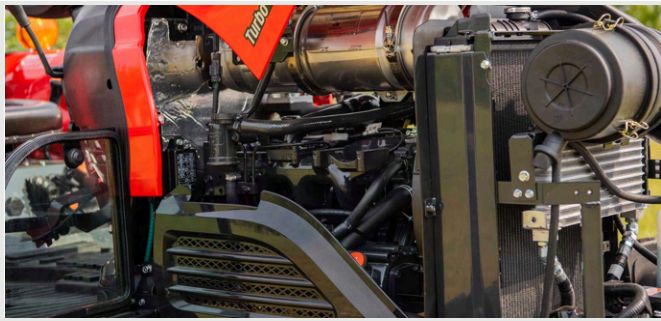


4. Low-speed / FWD / PTO control lever



6. Rear external hydraulic valve





### 4-cylinder TYM diesel engine with high output

Equipped with a powerful 4-cylinder, Stage V engine, this tractor boasts the power of a mid-sized tractor while maintaining a compact size.



### Minimized turning radius

Can make full turns even in small greenhouses. The steering angle makes turning more speedy and smooth, displacing less dirt on the way.



### Low-speed mode

The ultra-low speed mode allows efficient rotary tilling and building paddy walls in wet fields. The tractor drives slowly forward, creating a deep furrow in one motion.



### 3-point hitch with increased lift-capacity

Take advantage of the increased lift-capacity and control the RPM of the implement with the PTO lever to carry out difficult jobs like rotary tilling and weeding.



### Low overhead clearance

The low fender height means that the tractor can easily operate in spaces like greenhouses.



### 4 external rear hydraulic remotes for implements

The 4 rear hydraulic remotes allows for the installation of a wide range of implements, making various tasks such as rotary, plowing, and transporting material possible.

# Technical specifications

ENGINE	
Engine manufacturer	TYM T2300T
Type	Turbocharger
Gross engine power	58 PS   42.5 kW
PTO power	48 PS   35 kW
Rated engine speed	2600 rpm
No. of cylinders	4
Displacement	2287 cc   139.5 cu. in.
Air cleaner	Dry element
Alternator	12V, 50A
Fuel system	IDI
POWERTRAIN	
Transmission type	Synchro-shuttle
No. of speeds	F16 × R16
Max. traveling speed	28.89 km/h   17.95 mph
Brakes	Wet disc
Steering	Hydrostatic
Clutch	Dry disc
CAPACITIES	
Fuel tank	45 L   11.88 gal
Coolant	3.0 L   3.17 qt
Crankcase	6.4 L   6.8 qt
Transmission/Hydraulics system	39 L   10.30 gal
Front axle	6.4 L   6.76 qt

PTO	
PTO type	Independent
PTO control	Electric/Hydro
PTO rear	540/750/1000 rpm
HYDRAULIC SYSTEM	
Pump type	Gear pump
Implement flow	43.2 L/min   11.41 gpm
Steering flow	19.4 L/min   5.13 gpm
Total flow	62.6 L/min   16.54 gpm
Category, 3-point hitch	Cat 1
Hitch lift capacity	1231 kg   2714 lb
Hitch lift capacity at 24 inches behind link ends	861 kg   1898.18 lb
Lift control type	Position/Draft
No. of standard remote valves	4
DIMENSIONS & WEIGHTS	
Overall length with 3-point hitch	3200 mm   125.98 in.
Overall width	1540 mm   60.62 in.
Wheelbase	1805 mm   71.06 in.
Height to top of ROPS	2490 mm   98.03 in.
Height to top of cabin	-
Min. ground clearance	380 mm   14.96 in.
Min. turn radius with brakes	(L) 2410 mm   94.88 in. / (R) 2390 mm   94.09 in.
Min. turn radius without brakes	(L) 2850 mm   112.20 in. / (R) 2820 mm   111.02 in.
Weight with ROPS	1720 kg   3791.95 lb
Weight with cab	-
Track width	F: 1290 mm / R: 1180 mm
STANDARD TIRES	
Low Profile - Front	7-16
Low Profile - Rear	11.2-24
Agricultural - Front	9.5-16
Agricultural - Rear	13.6-26

# KJA57E Front-End Loader

## Attachments

The TYM KJA57E front-end loader raises the bar in material handling and productivity. Providing an impressive lift height and capacity, the KJA57E complements the power and performance of compatible TYM K57E compact tractors.

Lift height	3115 mm   122.6 in.
Lift capacity at pivot point (max. height)	940 kgf   2072 lb
Self leveling	Available

CAPACITIES & REACH	
Lift height	3115 mm   122.6 in.
Max. lift height under level bucket	2902 mm   114.3 in.
Clearance with bucket dumped	2422 mm   95.4 in.
Reach at maximum lift height	168 mm   6.6 in.
Max. dump angle	80°
Reach with bucket on ground	2155 mm   84.8 in.
Max. rollback angle	50°
Digging depth	130 mm   5.1 in.
Lift capacity at pivot point (max. height)	940 kgf   2072 lb
Breakout force at ground level, pivot pins	1343 kgf   2961 lb
Bucket rollback force at ground line	1556 kgf   3430 lb
Self leveling	Available
Relief valve setting (loader control valve)	165 kg/sq. cm   2347 psi
Compatible bucket sizes	66" Front-end loader bucket
DIMENSIONS & WEIGHTS	
Overall height in carry position	1670 mm   65.7 in.
Depth of Attachment (to the back of the inner shell)	549 mm   21.6 in.



Height of Attachment	510 mm   20.1 in.
Length of Attachment (to pivot pin)	665 mm   26.2 in.
Weight of boom & quick attach mechanism (1)	238 kg   525 lb
Weight of mounting frame (2)	85 kg   187 lb
Weight of bucket (3)	108 kg   238 lb
Loader total weight (1+2+3)	431 kg   950 lb
Lift cylinder	60 × 40 mm   2.4 × 1.6 in.
Bucket cylinder	60 × 35 mm   2.4 × 1.4 in.
Attachment used for specification	1570 mm   61.8 in.

CYCLE TIMES	
Boom raising time	4.5 sec
Boom lowering time	3.1 sec
Bucket rollback time	2.2 sec
Bucket dumping time	3.0 sec

COMPATIBLE BUCKET SIZES	
TYM's multi-purpose buckets are capable of bulldozing, scraping, loading, metering, moving, and clamping material.	
66" Front-End Loader bucket	



# Designed for your world

TYM creates tractors that bring together alluring form, advanced function and accessible value. Through Korean expertise in design, engineering and manufacturing, the company helps owners overcome every obstacle as they shape the world around them.

Headquartered in Korea with distribution across North America, Europe, and Asia, and assembly operations in the USA, TYM has been empowering customers for over 70 years.

[www.tym.world](http://www.tym.world)